

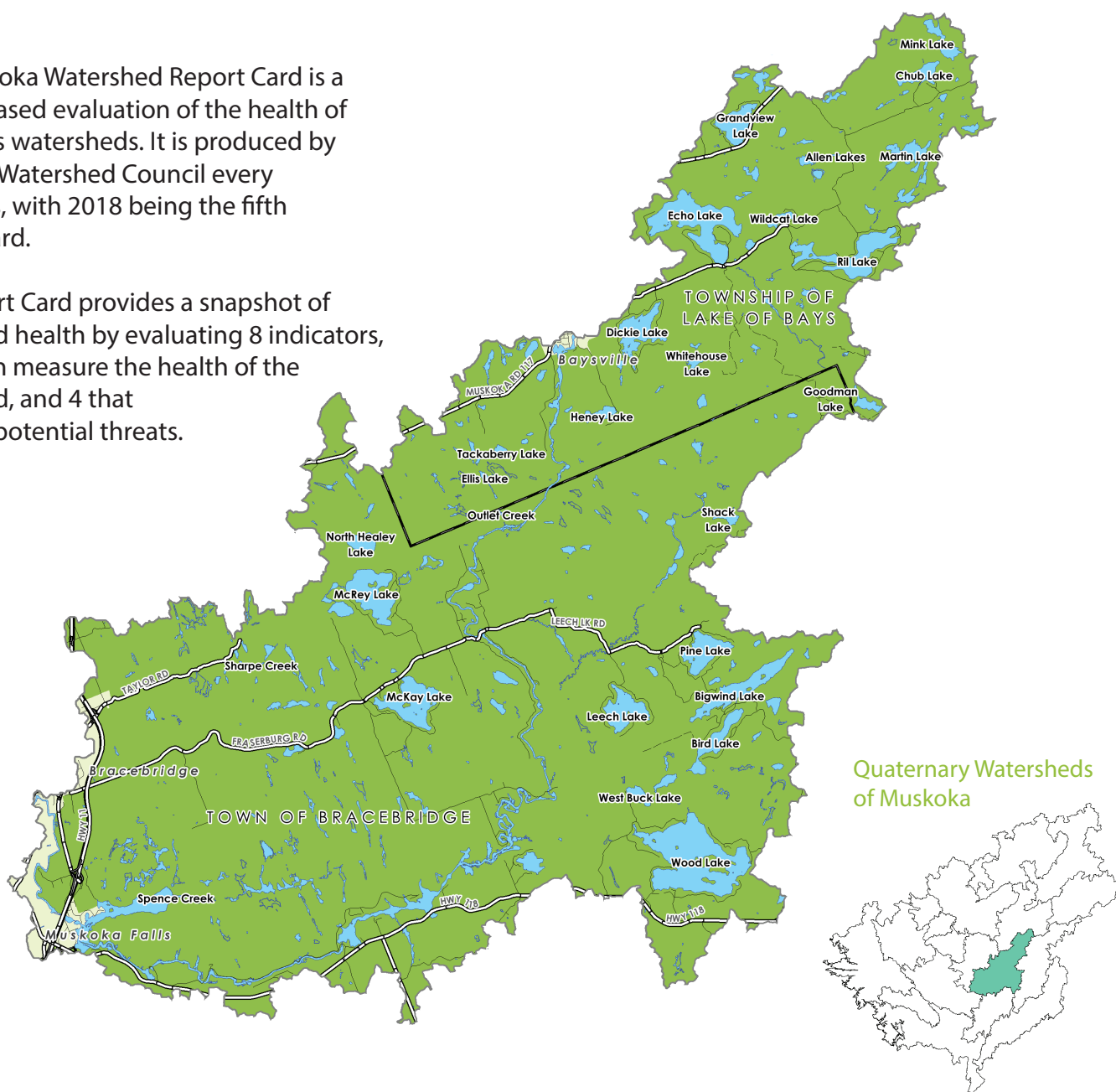


2018 Muskoka Watershed Report Card

Quaternary Watershed: SOUTH MUSKOKA RIVER

The Muskoka Watershed Report Card is a science based evaluation of the health of Muskoka's watersheds. It is produced by Muskoka Watershed Council every four years, with 2018 being the fifth Report Card.

The Report Card provides a snapshot of watershed health by evaluating 8 indicators, 4 of which measure the health of the watershed, and 4 that consider potential threats.



South Muskoka River Watershed Stats:

Total Area (hectares)	Largest Lake	# of Lakes (over 8 hectares)	% Crown Land
35,570	Wood Lake (385 ha)	27	15
% Protected Area (provincial parks, crown nature reserves, local land trusts)			
# of Dams	% Wetland		
5	12	2	



Total Phosphorous

Not Stressed



18/18 sampled lakes in the South Muskoka River Watershed have steady phosphorous concentrations.

Benthic Macroinvertebrates

Typical

of Lakes Sampled: 7

85% Typical

15% Atypical



Invasive Species

Not Stressed

Invasive species reported in this watershed:

- Phragmites
- Purple Loosestrife
- Japanese Knotweed
- Rusty Crayfish
- Spiny Waterflea



Fragmentation

Vulnerable

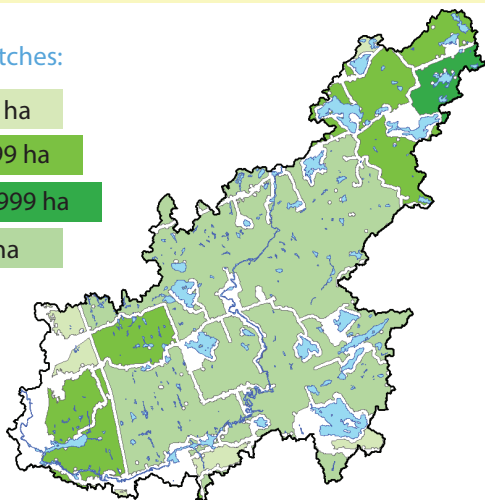
Size of Patches:

200 - 499 ha

500 - 4,999 ha

5,000 - 9,999 ha

10,000+ ha



76% OF LAND
IS NATURAL AREA

24% OF LAND
IS FRAGMENTED

Calcium

Not Stressed

9 Lakes

NOT STRESSED
(>2.0 mg/L)

3 Lakes

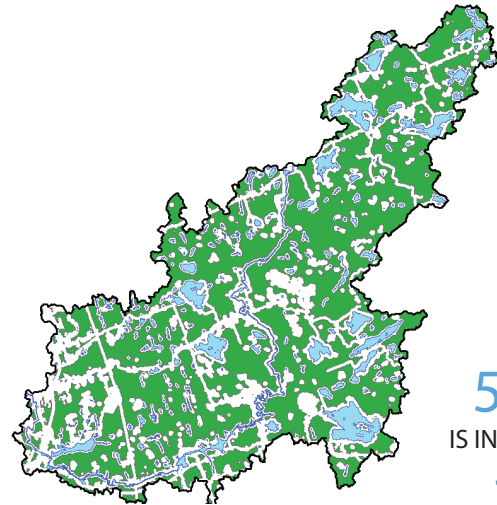
VULNERABLE
($1.5-2$ mg/L)

4 Lakes

STRESSED
(<1.5 mg/L)

Interior Forest

Not Stressed



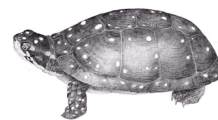
55% OF LAND
IS INTERIOR FOREST

19,180

HECTARES OF INTERIOR FOREST

Species At Risk

Not Graded



There are 46 species at risk in the Muskoka Watershed and the **Spotted Turtle** is one of them!

Climate Change

Vulnerable

Lakes in Muskoka today have approximately **3 weeks** less winter ice cover than in 1975.

Summer water temperatures in Muskoka's lakes are **0.5°C** warmer on average than in 1980.

