



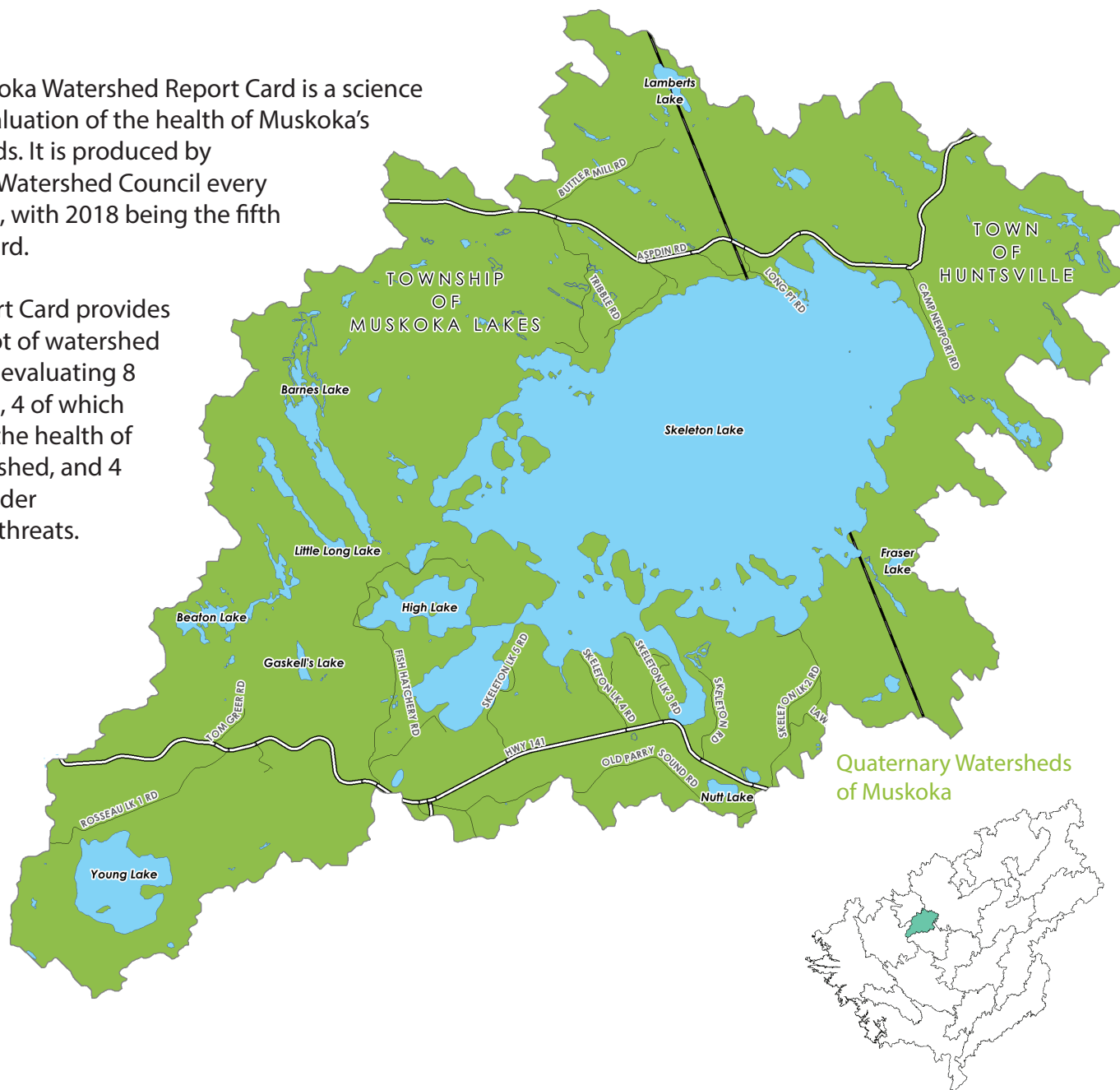
# 2018 Muskoka Watershed Report Card

Quaternary Watershed:

## SKELETON RIVER

The Muskoka Watershed Report Card is a science based evaluation of the health of Muskoka's watersheds. It is produced by Muskoka Watershed Council every four years, with 2018 being the fifth Report Card.

The Report Card provides a snapshot of watershed health by evaluating 8 indicators, 4 of which measure the health of the watershed, and 4 that consider potential threats.



### Skeleton River Watershed Stats:

Total Area (hectares)	Largest Lake	# of Lakes (over 8 hectares)	% Crown Land
9,247	Skeleton Lake (2,100 ha)	11	16
# of Dams	% Wetland	% Protected Area (provincial parks, crown nature reserves, local land trusts)	
0	6	0	



**Muskoka**  
WATERSHED COUNCIL

Dive deeper into the story map at [www.muskokawatershed.org/reportcard-story-map](http://www.muskokawatershed.org/reportcard-story-map)

## Total Phosphorous

Not Stressed



6/6 sampled lakes in the Skeleton River Watershed have steady phosphorous concentrations.

## Benthic Macroinvertebrates

Insufficient Data

# of Lakes Sampled: 2

Both lakes are categorized as typical, however, a minimum of 3 sampled lakes is required for a quaternary watershed grade.

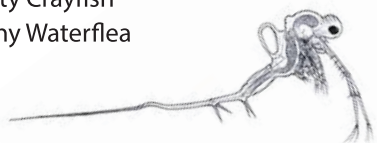


## Invasive Species

Stressed

Invasive species reported in this watershed:

- Phragmites
- Rusty Crayfish
- Spiny Waterflea



## Fragmentation

Vulnerable

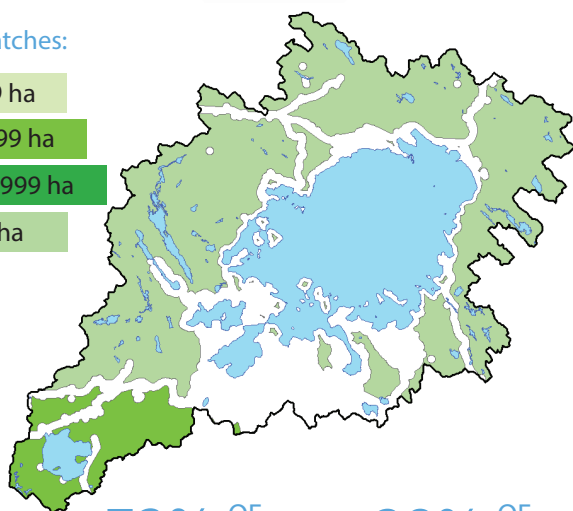
Size of Patches:

200 - 499 ha

500 - 4,999 ha

5,000 - 9,999 ha

10,000+ ha



72% OF LAND  
IS NATURAL AREA

28% OF LAND  
IS FRAGMENTED

## Calcium

Not Stressed

5 Lakes

NOT STRESSED  
( $>2.0$  mg/L)

0 Lakes

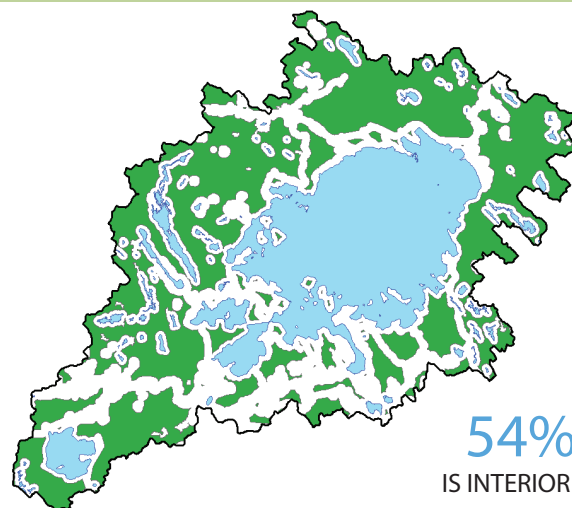
VULNERABLE  
( $1.5-2$  mg/L)

0 Lakes

STRESSED  
( $<1.5$  mg/L)

## Interior Forest

Not Stressed



54% OF LAND  
IS INTERIOR FOREST

3,662

HECTARES OF INTERIOR FOREST

## Species At Risk

Not Graded



There are 46 species at risk in the Muskoka Watershed and the **Eastern Wolf** is one of them!

## Climate Change

Vulnerable

Lakes in Muskoka today have approximately **3 weeks** less winter ice cover than in 1975.

Summer water temperatures in Muskoka's lakes are **0.5°C** warmer on average than in 1980.

