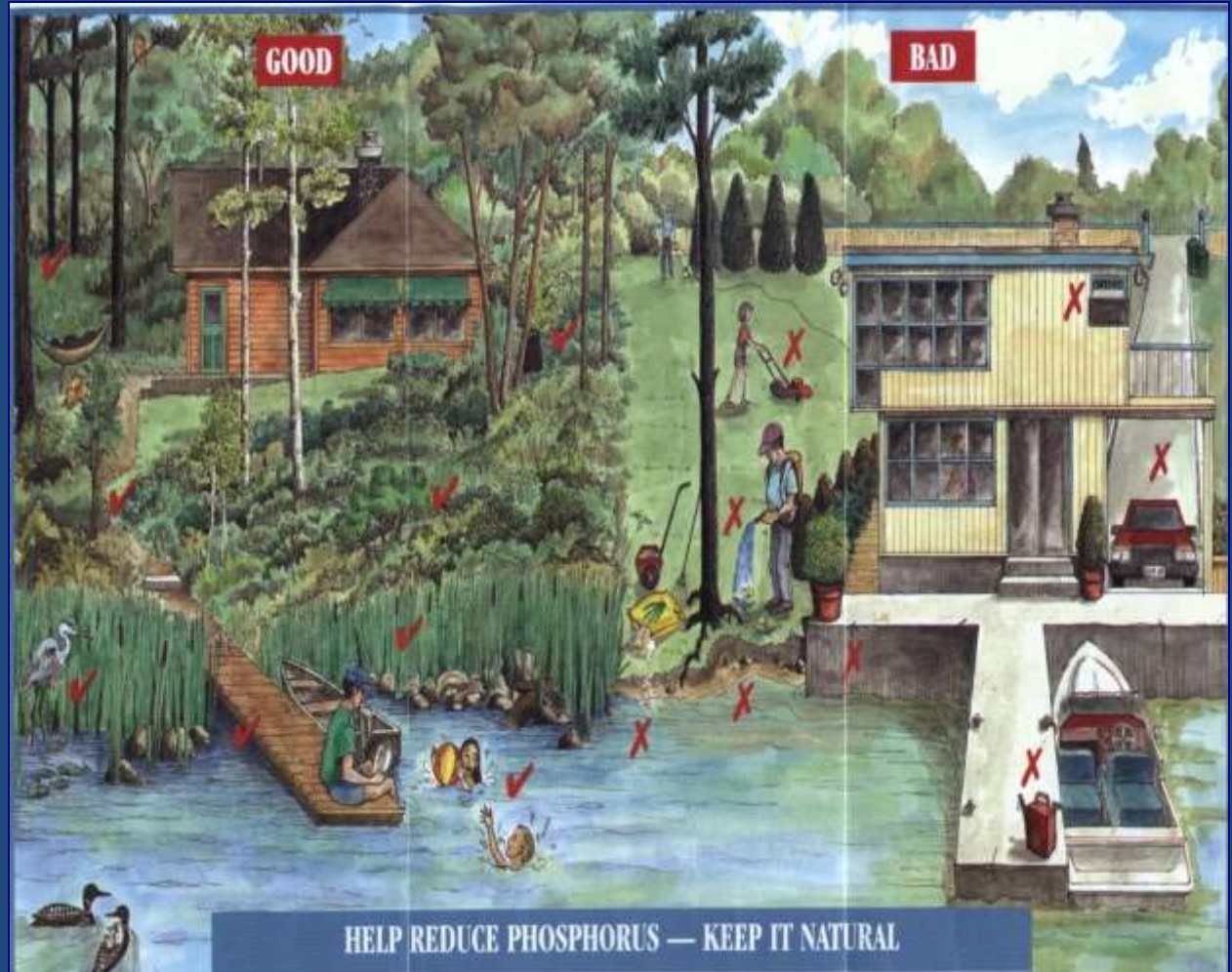


A TALE FROM THE RIVERBANK

... HOW TO GO NATURAL BY DOING NOTHING!





...it's a tale of how we transformed this



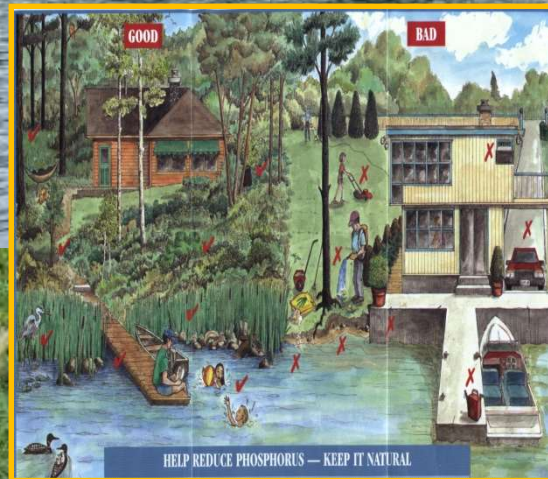
...into this

...by doing
nothing



There are many different approaches to shorelines

Good



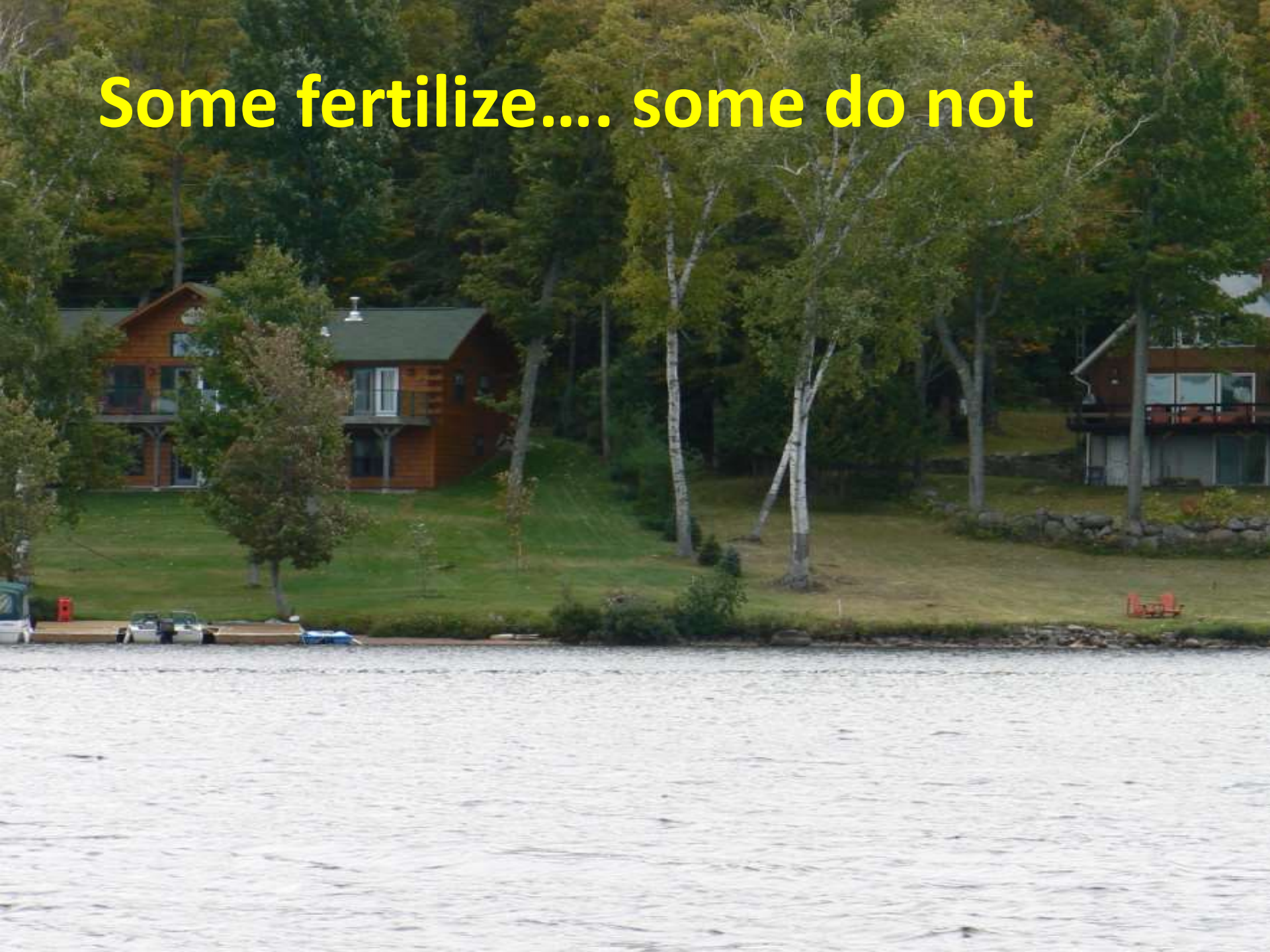
Bad



Restored

Curb

Some fertilize.... some do not



Some strip the land



Some paint it





Some are pirates!

Some over build



**Some dump foreign
substances**





Some remove all ground cover




Some even fence it



**Some manage their shoreline
vegetation carefully**



others do nothing

A man with long brown hair and glasses, wearing a black puffer vest over a white long-sleeved shirt and blue jeans, stands on a wooden deck in a snowy environment. He has a wide-eyed, open-mouthed expression of shock or surprise. He is pointing his right index finger towards a flip chart. The flip chart is on a black stand and has the words "Cool Approach" written in red marker. The background shows a snow-covered deck railing, a dark wooden building with white-trimmed windows, and snow-laden evergreen trees.

Cool
Approach

**Do
Nothing**

Our neighbourhood

Duck Chutes

Bracebridge
Resource
Centre



High Falls

Image © 2015 DigitalGlobe











- 
- A photograph of a shoreline with a wooden deck, a dock, and a list of maintenance tasks. The deck is on the left, and the dock is on the right. The list of tasks is in the top right corner.
- Planted sod
 - Cut lawn to water
 - Raked debris
 - Imported sand beach
 - Cut vegetation along shoreline
 - No buffer zone
 - No understorey
 - Barrels on raft

What is wrong with this shoreline?

Step One - Plan to Naturalize

1988

Inventory and
select area

Let the shoreline
buffer grow – 10
ft from shoreline

Stopped mowing

Let shoreline
edge grow

Planted
additional native
shrubs and trees



...un-vegetated shorelines lead to erosion, which is a major
factor to “shrinking land” (Maple 10).

Step Two – Extended Our Plan to Naturalize

1994

**Extended no cut
area – 33 ft from
shoreline**

Stopped mowing

**Let shoreline
edge grow**

**Planted
additional native
shrubs and trees**



Step three ... do nothing!

2000

No cut, no
rake

Planted more
trees

Expanded
shoreline
buffer to 45 ft

Relaxed
more!



2004



2006



2008



2009



Lessons About Evolution

2009 Blister Rust



Insights
A publication of the Ontario Forest Research Institute

Pill shows promise in fighting white pine blister rust

By Angela Le, Communications

Researchers are nearly done testing a pill that could greatly improve survival and growth of eastern white pine regeneration, reports Ontario Forestry, the project leader, in studies of sites near Timmins and Agassiz. Meanwhile, those seedlings planted without the pill experienced up to 50% mortality by year 1, while only 20-25% of those treated with the pill died. By the end of this growing season, all of the remaining untreated seedlings will probably be dead, Meyer says.

The pill under study contains a fungicide, an insecticide, and a fertilizer and is placed in the planting hole under the seedling. The young tree slowly absorbs the contents of the pill, which keeps it from being eaten by beetles and also the white pine weevil and to grow more quickly. The increased survival and accelerated growth give seedlings a competitive advantage over other vegetation and shorten the time of greatest vulnerability to winter root attack.

"The data we have so far indicate that this pill really does help white pine growing strong and at least age 5, when we can start to manage other risk through other means, such as pruning open branches," Meyer says. "And the fertilizer, which accelerates growth, helps reduce the time until the crown's start to flush, which changes the microclimate, reducing moisture stress in the lower and discouraging winter root attack."

White pine has extremely high economic, aesthetic, and cultural value. This species once dominated large areas of Ontario's Great Lakes-St. Lawrence and southern Huron Provinces regions, but today it occupies only a fraction of its former range.

Continued on Page 3

**Volume 4, Number 1
Summer 1999**

In this Issue ...

- Pine bark beetle pest 1
- 2010 perspective 2
- Adaptive management working in Ontario's forest sector 3
- Assessing the effects of climate change on trees 4
- How can forests respond to climate change? 5
- UPR: A new perspective on forest 6
- How do forests, water, and agriculture interact? 7
- Assessing water 8

Ontario
Ministry of Natural Resources
Ontario Forest Research Institute
Reproduction of this publication is encouraged.



- Decision to cut
- Protect and regenerate undergrowth



2010

Wind damage
likely caused
by removal
of tree



2010



2012



Shoreline edge rehabilitated...



Riparian buffer rehabilitated



First Year... bad

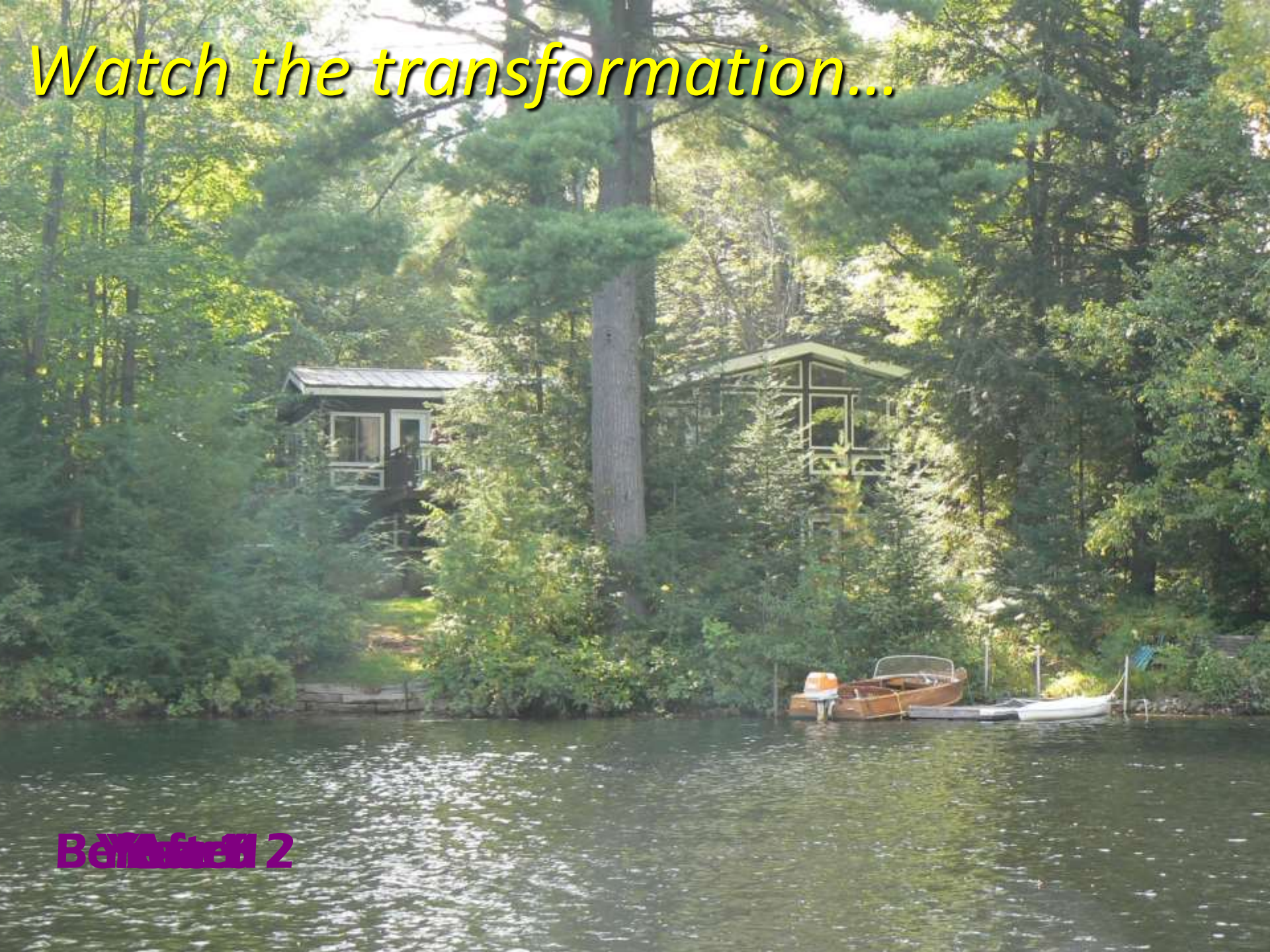


**...after 6 years...
good**



**...after 12 years...
even better**

Watch the transformation...



Before 2

A tale about Down Woody Debris



Privacy benefits



More Wildlife



**More turtles along
the shoreline**



**More turtles
on land**



**More fish
in the littoral zone**





**Aesthetically
pleasing!**



Our dog likes it!



And our family does too!





Blanding's Turtle

photo by Jim Harding

Frog and Turtle Tally Adopt a Pond Program

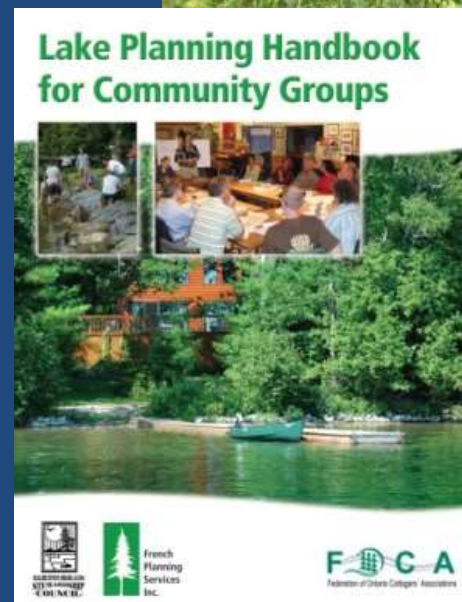
www.torontozoo.com/adoptapond

Randy P French BES RPP MCIP
Marg R French BES RPP MCIP

French Planning Services

1016 Holiday Park Drive
Bracebridge Ontario
P1L 1W9
705 646 0851

www.lakeplan.com
www.frenchplanning.com





Conservation Checklist

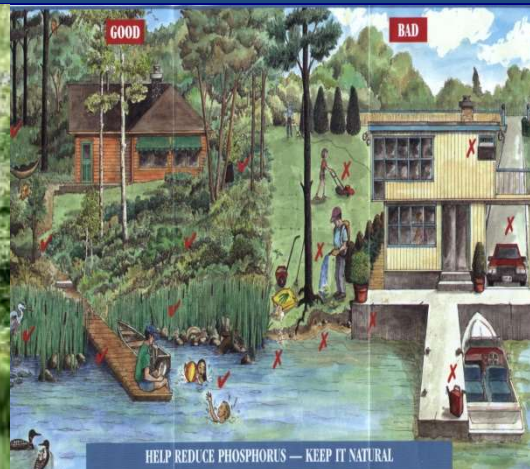
... go with nature

- ✓ Naturalize shorelines
- ✓ Plant trees and shrubs
- ✓ Retain down woody debris and shoreline buffers
- ✓ Increase shoreline structure setbacks
- ✓ Install dark-sky friendly lighting along walkways and on buildings
- ✓ Increase porous surfaces (walkways and driveways)
- ✓ Plant rain gardens, and/or create depressions and rough surfaces in grassy areas
- ✓ Practice “Green Gardening Ethics” and other practices
- ✓ Community Involvement – wetland and shoreline conservation... be a good role model.



Naturalizing your shoreline will:

- ✓ Slow surface and shoreline erosion.
- ✓ Prevent water pollution and water loss.
- ✓ Provide food, shelter, nesting, nurseries and migratory corridors for fish and wildlife species.
- ✓ Attract birds and wildlife to your shoreline.
- ✓ Shade and cool the shoreline for fish & aquatic creatures.
- ✓ Add to aesthetic character and value of your property.
- ✓ Increase privacy and enhance the feeling of a non-urban environment.
- ✓ Reduce maintenance time and costs.
- ✓ Reduce noise.



Other Quick Ideas

- ❑ Disposing of hot tub and pool water
- ❑ No burn barrels
- ❑ Minimize use of pesticides (mouse traps)
- ❑ Sweep your driveway and walkways instead of washing them with the hose
- ❑ Reduce salt on driveways and paths – use sand, enviro products (calcium magnesium acetate or potassium acetate)
- ❑ Don't dump gas/oil/antifreeze or any foreign toxic substances on your property
- ❑ Conserve water
- ❑ Geese and lawns
- ❑ Continue to reduce, reuse and recycle
- ❑ Use alternative cleaning products