



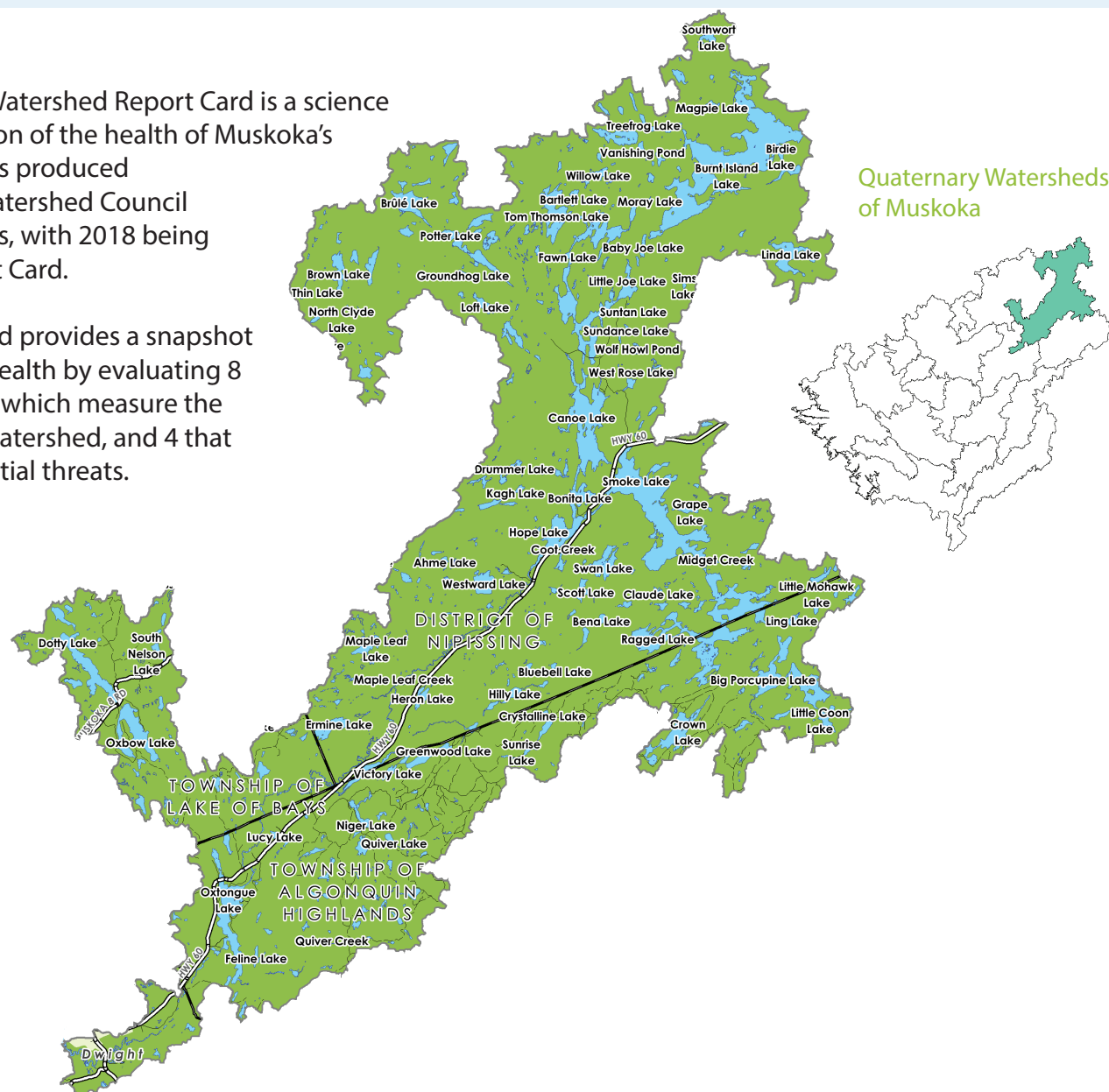
2018 Muskoka Watershed Report Card

Quaternary Watershed:

OXTONGUE RIVER

The Muskoka Watershed Report Card is a science based evaluation of the health of Muskoka's watersheds. It is produced by Muskoka Watershed Council every four years, with 2018 being the fifth Report Card.

The Report Card provides a snapshot of watershed health by evaluating 8 indicators, 4 of which measure the health of the watershed, and 4 that consider potential threats.



Oxtongue River Watershed Stats:

Total Area (hectares)	Largest Lake	# of Lakes (over 8 hectares)	% Crown Land
60,716	Burnt Island Lake (966 ha)	38	28
# of Dams	% Wetland	% Protected Area (provincial parks, crown nature reserves, local land trusts)	
5	5	69	



Total Phosphorous

Not Stressed



6/6 sampled lakes in the Oxtongue River Watershed have steady phosphorous concentrations.

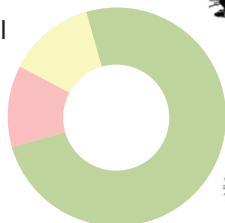
Benthic Macroinvertebrates

Typical

of Lakes Sampled: 10

10% Atypical
10% Extremely Atypical

80% Typical

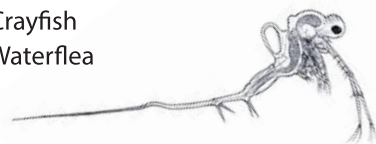


Invasive Species

Not Stressed

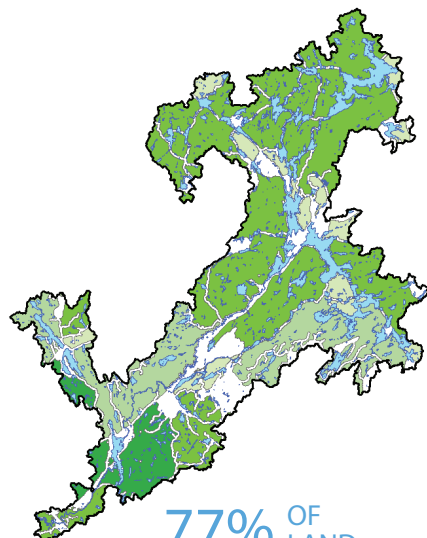
Invasive species reported in this watershed:

- Japanese Knotweed
- Rusty Crayfish
- Spiny Waterflea



Fragmentation

Vulnerable



Size of Patches:

200 - 499 ha

500 - 4,999 ha

5,000 - 9,999 ha

10,000+ ha

77% OF LAND
IS NATURAL AREA

23% OF LAND
IS FRAGMENTED

Calcium

Vulnerable

1 Lake

NOT STRESSED
(>2.0 mg/L)

2 Lakes

VULNERABLE
(1.5-2 mg/L)

2 Lakes

STRESSED
(<1.5 mg/L)

Interior Forest

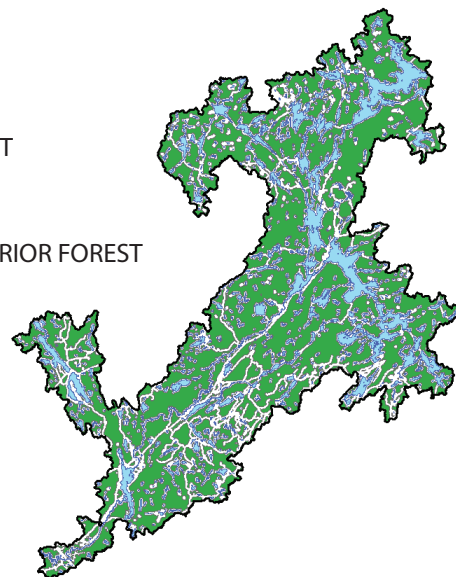
Not Stressed

54% OF LAND

IS INTERIOR FOREST

31,897

HECTARES OF INTERIOR FOREST



Species At Risk

Not Graded

There are 46 species at risk in the Muskoka Watershed and the **Eastern Foxsnake** is one of them!



Climate Change

Vulnerable

Lakes in Muskoka today have approximately **3 weeks** less winter ice cover than in 1975.

Summer water temperatures in Muskoka's lakes are **0.5°C** warmer on average than in 1980.

