

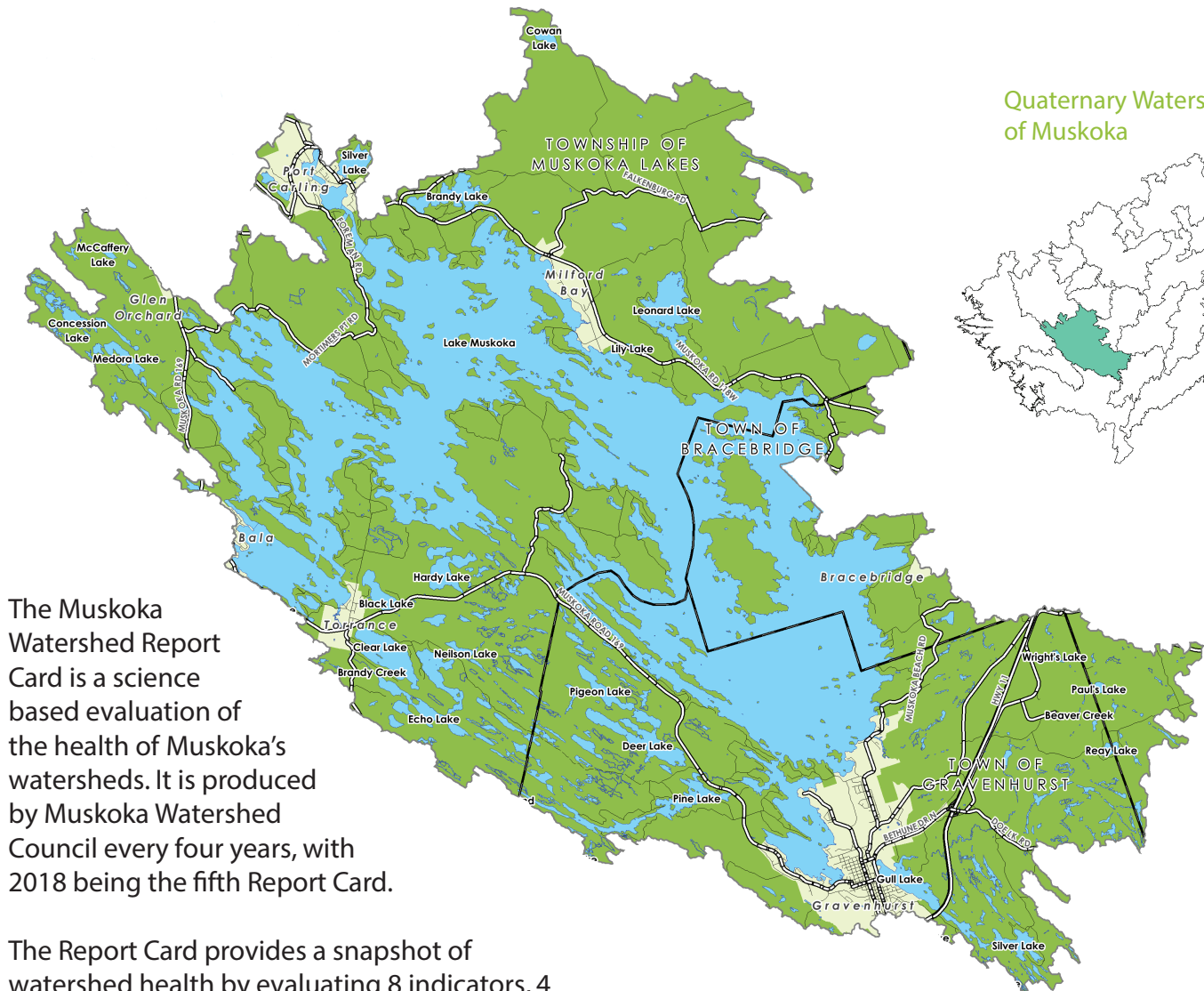
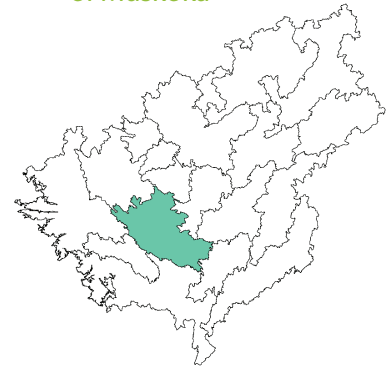


# 2018 Muskoka Watershed Report Card

Quaternary Watershed:

## LAKE MUSKOKA

Quaternary Watersheds  
of Muskoka



The Muskoka Watershed Report Card is a science based evaluation of the health of Muskoka's watersheds. It is produced by Muskoka Watershed Council every four years, with 2018 being the fifth Report Card.

The Report Card provides a snapshot of watershed health by evaluating 8 indicators, 4 of which measure the health of the watershed, and 4 that consider potential threats.

### Lake Muskoka Watershed Stats:

Total Area (hectares)	Largest Lake	# of Lakes (over 8 hectares)	% Crown Land
43,039	Lake Muskoka (10000 ha)	30	6
# of Dams	% Wetland	% Protected Area (provincial parks, crown nature reserves, local land trusts)	
2	8	6	



**Muskoka**  
WATERSHED COUNCIL

Dive deeper into the story map at [www.muskokawatershed.org/reportcard-story-map](http://www.muskokawatershed.org/reportcard-story-map)

## Total Phosphorous

Not Stressed



17/17 sampled lakes in the Lake Muskoka Watershed have steady phosphorous concentrations.

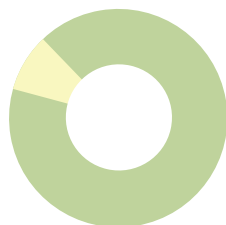
## Benthic Macroinvertebrates

Typical

# of Lakes Sampled: 10

10% Atypical

90% Typical



## Invasive Species

Vulnerable

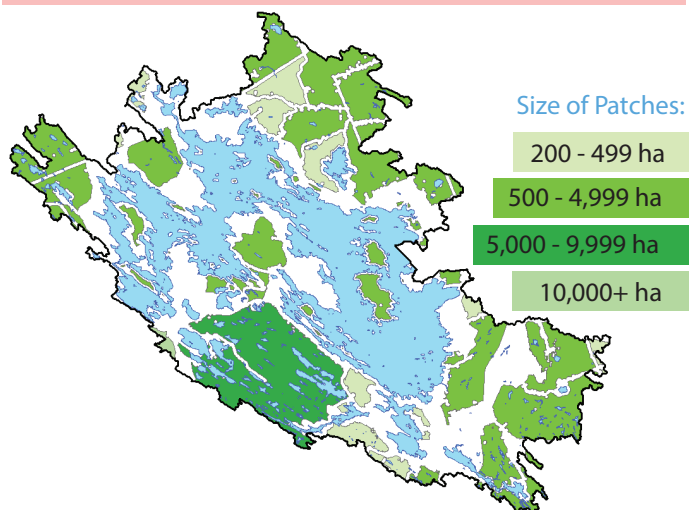
Invasive species reported in this watershed:

- Phragmites
- Purple Loosestrife
- Giant Hogweed
- Japanese Knotweed
- Rainbow Smelt
- Spiny Waterflea



## Fragmentation

Stressed



57% OF LAND  
IS NATURAL AREA

43% OF LAND  
IS FRAGMENTED

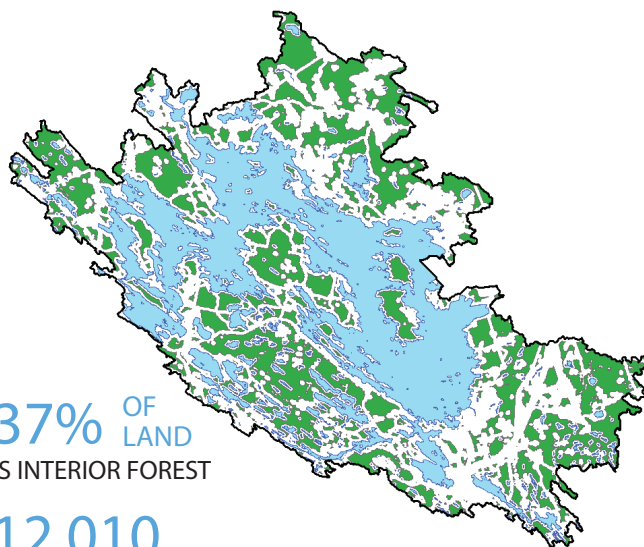
## Calcium

Not Stressed

12 Lakes NOT STRESSED (>2.0 mg/L)  
3 Lakes VULNERABLE (1.5-2 mg/L)  
2 Lakes STRESSED (<1.5 mg/L)

## Interior Forest

Vulnerable



37% OF LAND  
IS INTERIOR FOREST

12,010  
HECTARES OF INTERIOR FOREST

## Species At Risk

Not Graded



There are 46 species at risk in the Muskoka Watershed and the **Black Tern** is one of them!

## Climate Change

Vulnerable

Lakes in Muskoka today have approximately **3 weeks** less winter ice cover than in 1975.

Summer water temperatures in Muskoka's lakes are **0.5 °C** warmer on average than in 1980.

