



2018 Muskoka Watershed Report Card

Quaternary Watershed: LAKE OF BAYS

The Muskoka Watershed Report Card is a science based evaluation of the health of Muskoka's watersheds. It is produced by Muskoka Watershed Council every four years, with 2018 being the fifth Report Card.

The Report Card provides a snapshot of watershed health by evaluating 8 indicators, 4 of which measure the health of the watershed, and 4 that consider potential threats.

Quaternary Watersheds
of Muskoka



Lake of Bays Watershed Stats:

Total Area
(hectares)

38,526

Largest Lake

Lake of Bays (750 ha)

of Lakes
(over 8 hectares)

25

% Crown Land

24

of Dams

1 (Baysville)

% Wetland

6

% Protected Area

(provincial parks, crown nature reserves, local land trusts)

1



Muskoka
WATERSHED COUNCIL

Dive deeper into the story map at www.muskokawatershed.org/reportcard-story-map

Total Phosphorous

Not Stressed



15/15 sampled lakes in the Lake of Bays Watershed have steady phosphorous concentrations.

Benthic Macroinvertebrates

Typical

of Lakes Sampled: 4

100% Typical



Invasive Species

Not Stressed

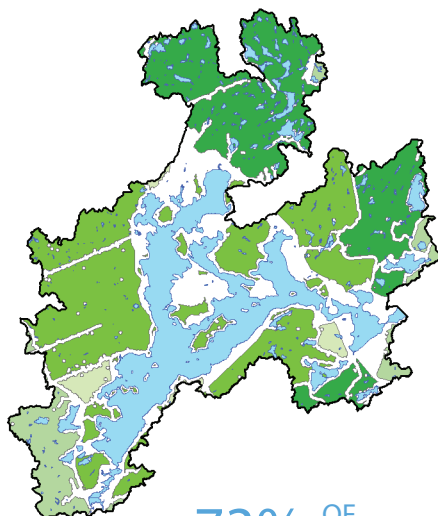
Invasive species reported in this watershed:

- Phragmites
- Purple Loosestrife
- Giant Hogweed
- Japanese Knotweed
- Rainbow Smelt
- Garlic Mustard
- Spiny Waterflea



Fragmentation

Vulnerable



Size of Patches:

200 - 499 ha

500 - 4,999 ha

5,000 - 9,999 ha

10,000+ ha

73% OF LAND
IS NATURAL AREA

27% OF LAND
IS FRAGMENTED

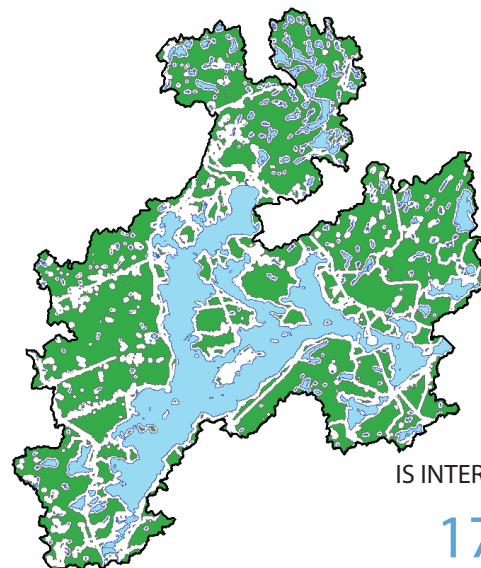
Calcium

Not Stressed

7 Lakes NOT STRESSED (>2.0 mg/L)
5 Lakes VULNERABLE (1.5-2 mg/L)
2 Lakes STRESSED (<1.5 mg/L)

Interior Forest

Not Stressed

**57%**

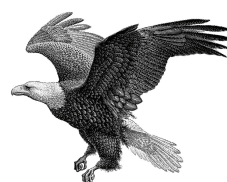
IS INTERIOR FOREST

17,295

HECTARES OF INTERIOR FOREST

Species At Risk

Not Graded



There are 46 species at risk in the Muskoka Watershed and the **Bald Eagle** is one of them!

Climate Change

Vulnerable

Lakes in Muskoka today have approximately **3 weeks** less winter ice cover than in 1975.

Summer water temperatures in Muskoka's lakes are **0.5 °C** warmer on average than in 1980.

