

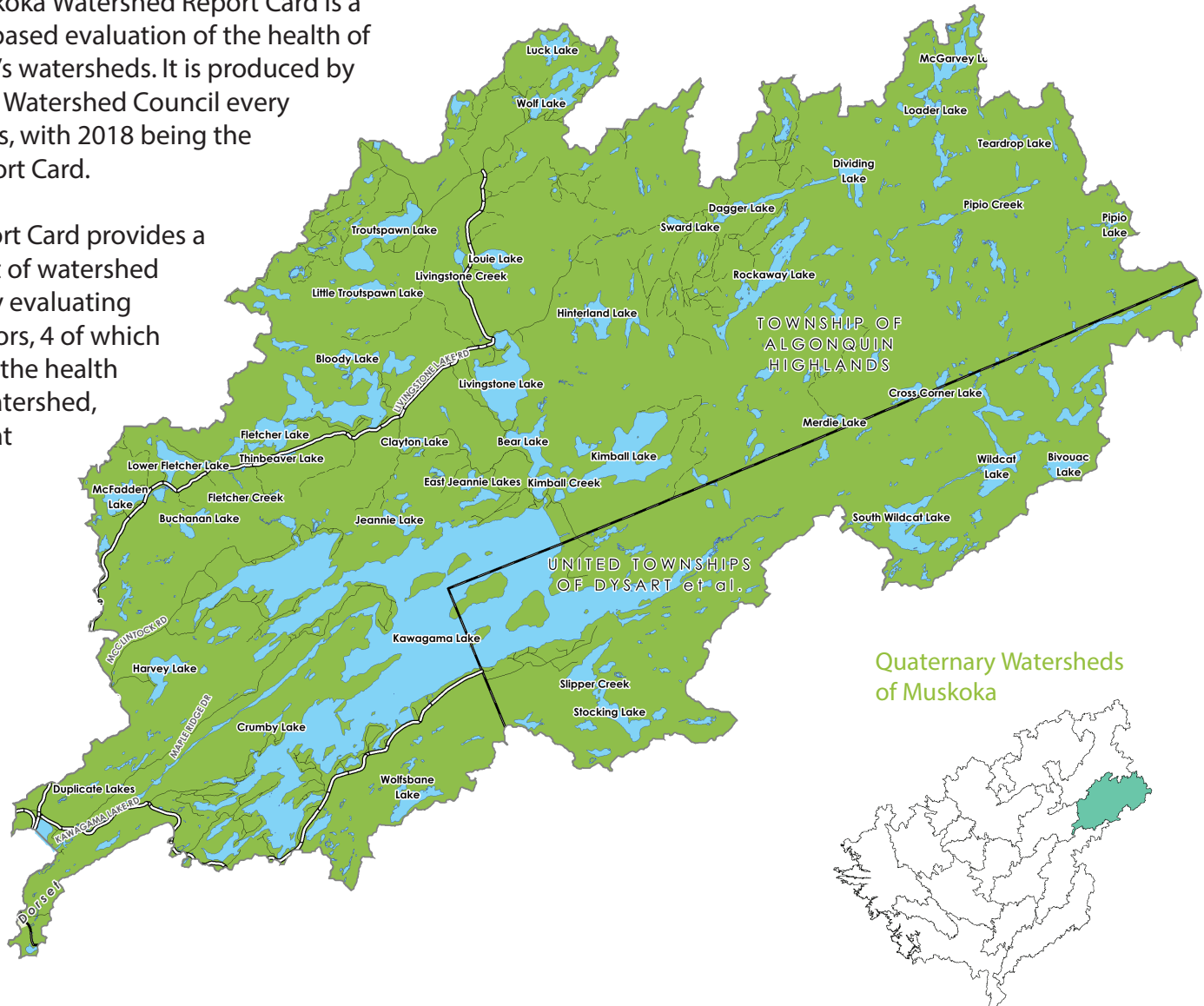


2018 Muskoka Watershed Report Card

Quaternary Watershed: HOLLOW RIVER

The Muskoka Watershed Report Card is a science-based evaluation of the health of Muskoka's watersheds. It is produced by Muskoka Watershed Council every four years, with 2018 being the fifth Report Card.

The Report Card provides a snapshot of watershed health by evaluating 8 indicators, 4 of which measure the health of the watershed, and 4 that consider potential threats.



Hollow River Watershed Stats:

Total Area (hectares)	Largest Lake	# of Lakes (over 8 hectares)	% Crown Land
40,863	Kawagama Lake (12400 ha)	43	61
# of Dams	% Wetland	% Protected Area (provincial parks, crown nature reserves, local land trusts)	
3	4	14	



Total Phosphorous

Not Stressed



5/5 sampled lakes in the Hollow River Watershed have steady phosphorous concentrations.

Benthic Macroinvertebrates

Typical

of Lakes Sampled: 5

100% Typical



Invasive Species

Not Stressed

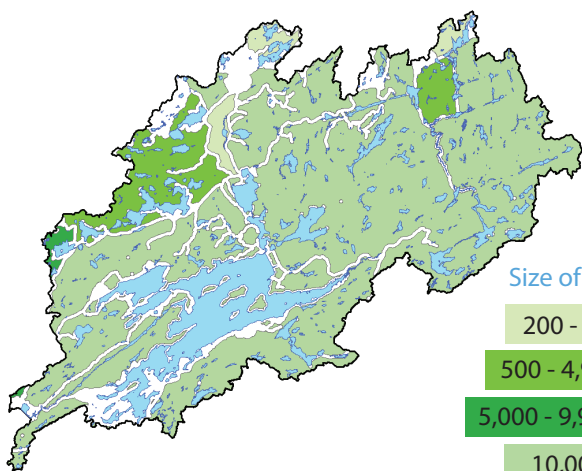
Invasive species reported in this watershed:

- Rusty Crayfish
- Spiny Waterflea



Fragmentation

Vulnerable



Size of Patches:

200 - 499 ha

500 - 4,999 ha

5,000 - 9,999 ha

10,000+ ha

84% OF LAND
IS NATURAL AREA

16% OF LAND
IS FRAGMENTED

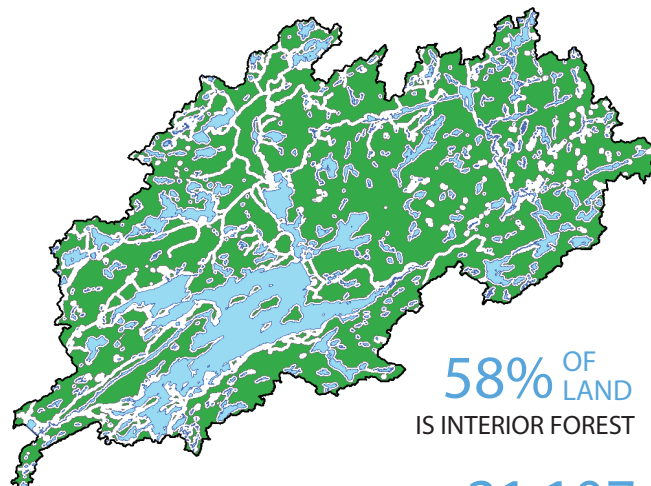
Calcium

Vulnerable

0 Lakes NOT STRESSED (>2.0 mg/L) **5 Lakes** VULNERABLE (1.5-2 mg/L) **0 Lakes** STRESSED (<1.5 mg/L)

Interior Forest

Not Stressed



58% OF LAND
IS INTERIOR FOREST

21,107

HECTARES OF INTERIOR FOREST

Species At Risk

Not Graded



There are 46 species at risk in the Muskoka Watershed and the **Least Bittern** is one of them!

Climate Change

Vulnerable

Lakes in Muskoka today have approximately **3 weeks** less winter ice cover than in 1975.

Summer water temperatures in Muskoka's lakes are **0.5°C** warmer on average than in 1980.

