



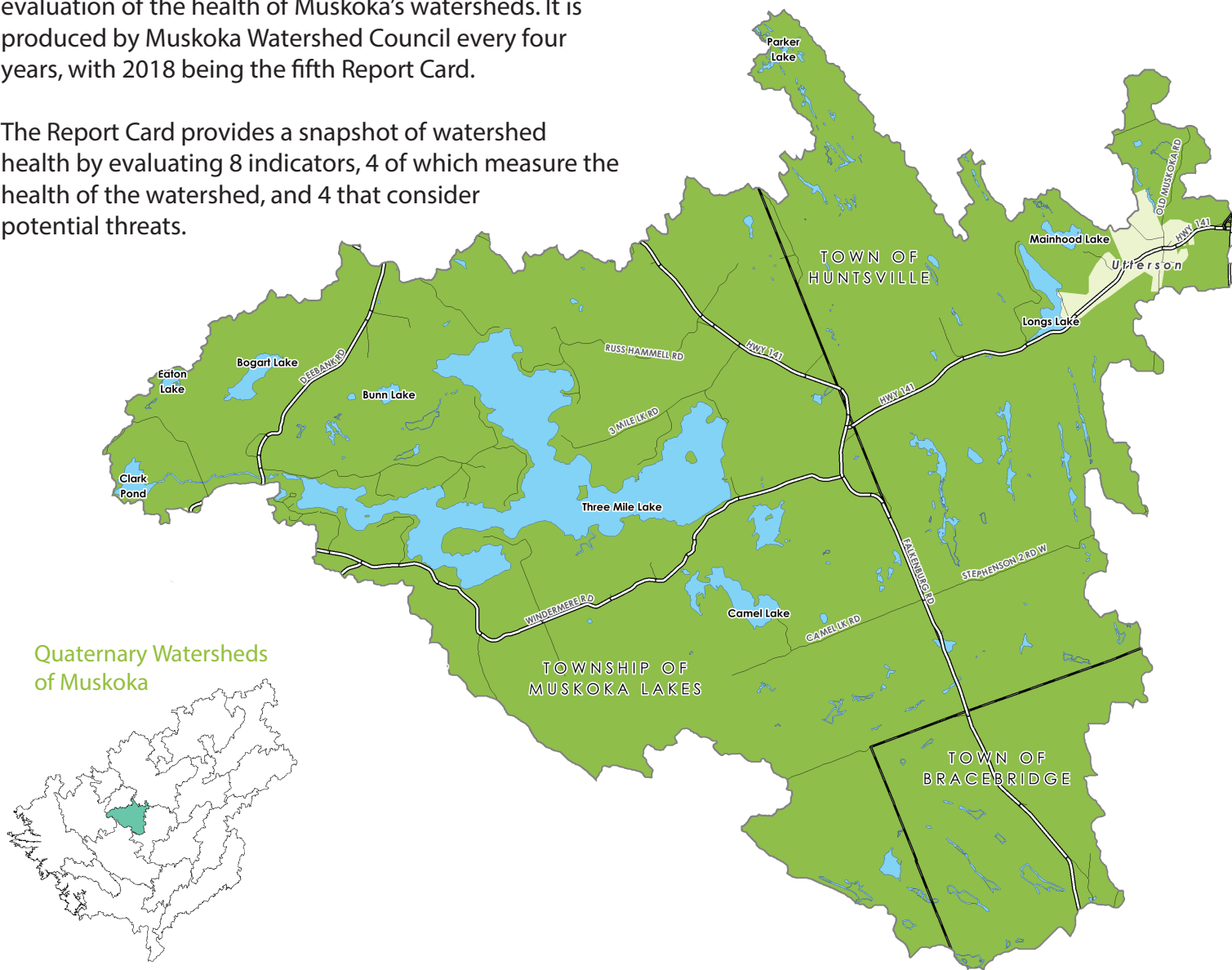
2018 Muskoka Watershed Report Card

Quaternary Watershed:

DEE RIVER

The Muskoka Watershed Report Card is a science-based evaluation of the health of Muskoka's watersheds. It is produced by Muskoka Watershed Council every four years, with 2018 being the fifth Report Card.

The Report Card provides a snapshot of watershed health by evaluating 8 indicators, 4 of which measure the health of the watershed, and 4 that consider potential threats.



Dee River Watershed Stats:

Total Area (hectares)	Largest Lake	# of Lakes (over 8 hectares)	% Crown Land
14,869	Three Mile Lake (900 ha)	7	3
# of Dams	% Wetland	% Protected Area (provincial parks, crown nature reserves, local land trusts)	
0	11	0	



Muskoka
WATERSHED COUNCIL

Dive deeper into the story map at www.muskokawatershed.org/reportcard-story-map

Total Phosphorous

Not Stressed



4/4 sampled lakes in the Dee River Watershed have steady phosphorous concentrations.

Benthic Macroinvertebrates

Insufficient Data

of Lakes Sampled: 1

The sampled lake is categorized as typical, however a minimum of 3 sampled lakes is required for a quaternary watershed grade.

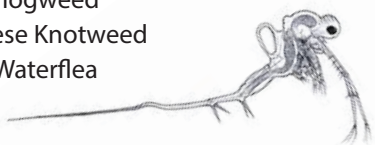


Invasive Species

Not Stressed

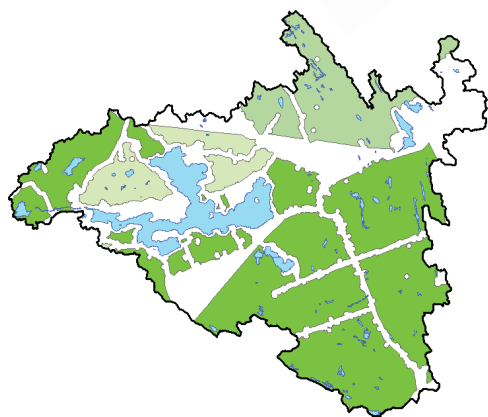
Invasive species reported in this watershed:

- Phragmites
- Giant Hogweed
- Japanese Knotweed
- Spiny Waterflea



Fragmentation

Vulnerable



Size of Patches:

200 - 499 ha

500 - 4,999 ha

5,000 - 9,999 ha

10,000+ ha

70% OF LAND
IS NATURAL AREA

30% OF LAND
IS FRAGMENTED

Calcium

Not Stressed

2 Lakes

NOT STRESSED
(>2.0 mg/L)

2 Lakes

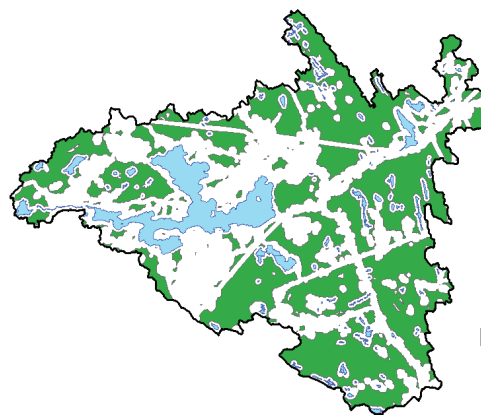
VULNERABLE
($1.5-2$ mg/L)

0 Lakes

STRESSED
(<1.5 mg/L)

Interior Forest

Vulnerable



47% OF LAND
IS INTERIOR FOREST

6,470

HECTARES OF INTERIOR FOREST

Species At Risk

Not Graded



There are 46 species at risk in the Muskoka Watershed and the **Bobolink** is one of them!

Climate Change

Vulnerable

Lakes in Muskoka today have approximately **3 weeks** less winter ice cover than in 1975.

Summer water temperatures in Muskoka's lakes are **0.5°C** warmer on average than in 1980.



Muskoka
WATERSHED COUNCIL

Dive deeper into the story map at www.muskokawatershed.org/reportcard-story-map