

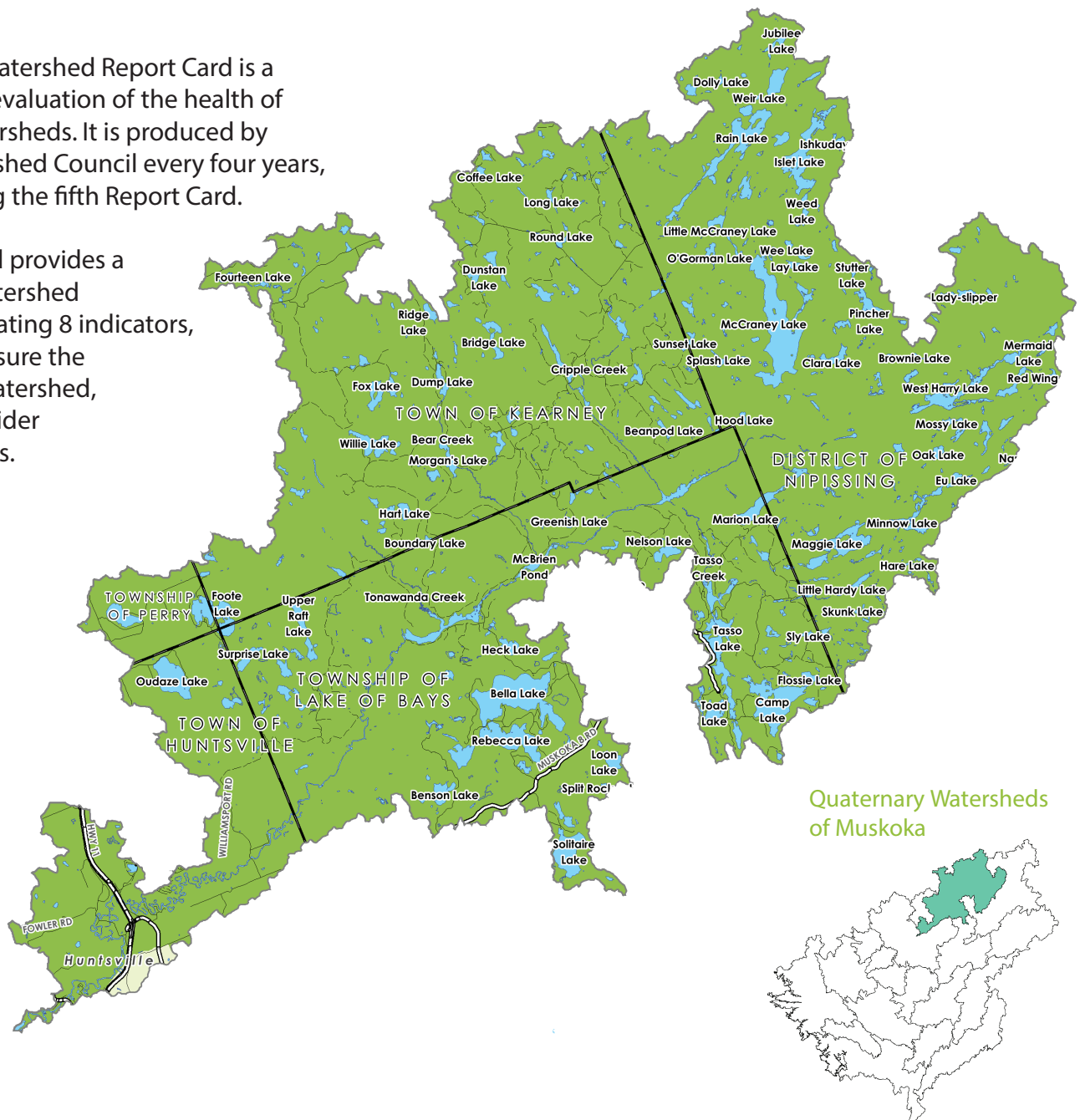


2018 Muskoka Watershed Report Card

Quaternary Watershed: BIG EAST RIVER

The Muskoka Watershed Report Card is a science-based evaluation of the health of Muskoka's watersheds. It is produced by Muskoka Watershed Council every four years, with 2018 being the fifth Report Card.

The Report Card provides a snapshot of watershed health by evaluating 8 indicators, 4 of which measure the health of the watershed, and 4 that consider potential threats.



Big East River Watershed Stats:

Total Area (hectares)	Largest Lake	# of Lakes (over 8 hectares)	% Crown Land
64,699	McCraney Lake (342 ha)	47	39
# of Dams	% Wetland	% Protected Area (provincial parks, crown nature reserves, local land trusts)	
4	5	34	



Total Phosphorous

Not Stressed



8/8 sampled lakes in the Big East River Watershed have steady phosphorous concentrations.

Benthic Macroinvertebrates

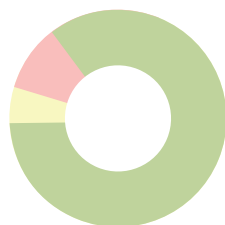
Typical

of Lakes Sampled: 19

15% Extremely Atypical

10% Atypical

73% Typical

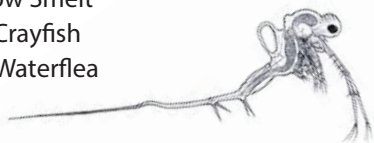


Invasive Species

Not Stressed

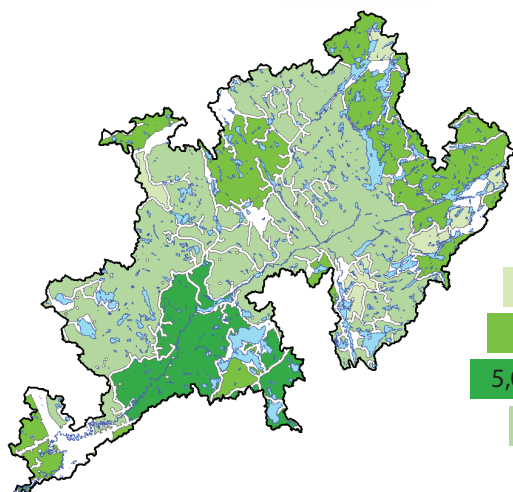
Invasive species reported in this watershed:

- Japanese Knotweed
- Rainbow Smelt
- Rusty Crayfish
- Spiny Waterflea



Fragmentation

Vulnerable



Size of Patches:

200 - 499 ha

500 - 4,999 ha

5,000 - 9,999 ha

10,000+ ha

79% OF LAND
IS NATURAL AREA

21% OF LAND
IS FRAGMENTED

Calcium

Not Stressed

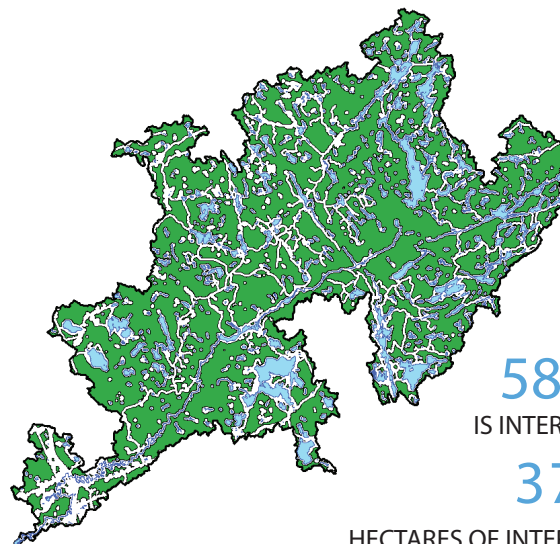
5 Lakes
NOT STRESSED
(>2.0 mg/L)

3 Lakes
VULNERABLE
($1.5-2$ mg/L)

1 Lake
STRESSED
(<1.5 mg/L)

Interior Forest

Not Stressed



58% OF LAND
IS INTERIOR FOREST

37,305

HECTARES OF INTERIOR FOREST

Species At Risk

Not Graded



There are 46 species at risk in the Muskoka Watershed and **Broad Beech Fern** is one of them!

Climate Change

Vulnerable

Lakes in Muskoka today have approximately **3 weeks** less winter ice cover than in 1975.

Summer water temperatures in Muskoka's lakes are **0.5°C** warmer on average than in 1980.

