

Troubling Times for Our Turtles

Glenda Clayton
Georgian Bay Biosphere Reserve



United Nations
Educational, Scientific and
Cultural Organization



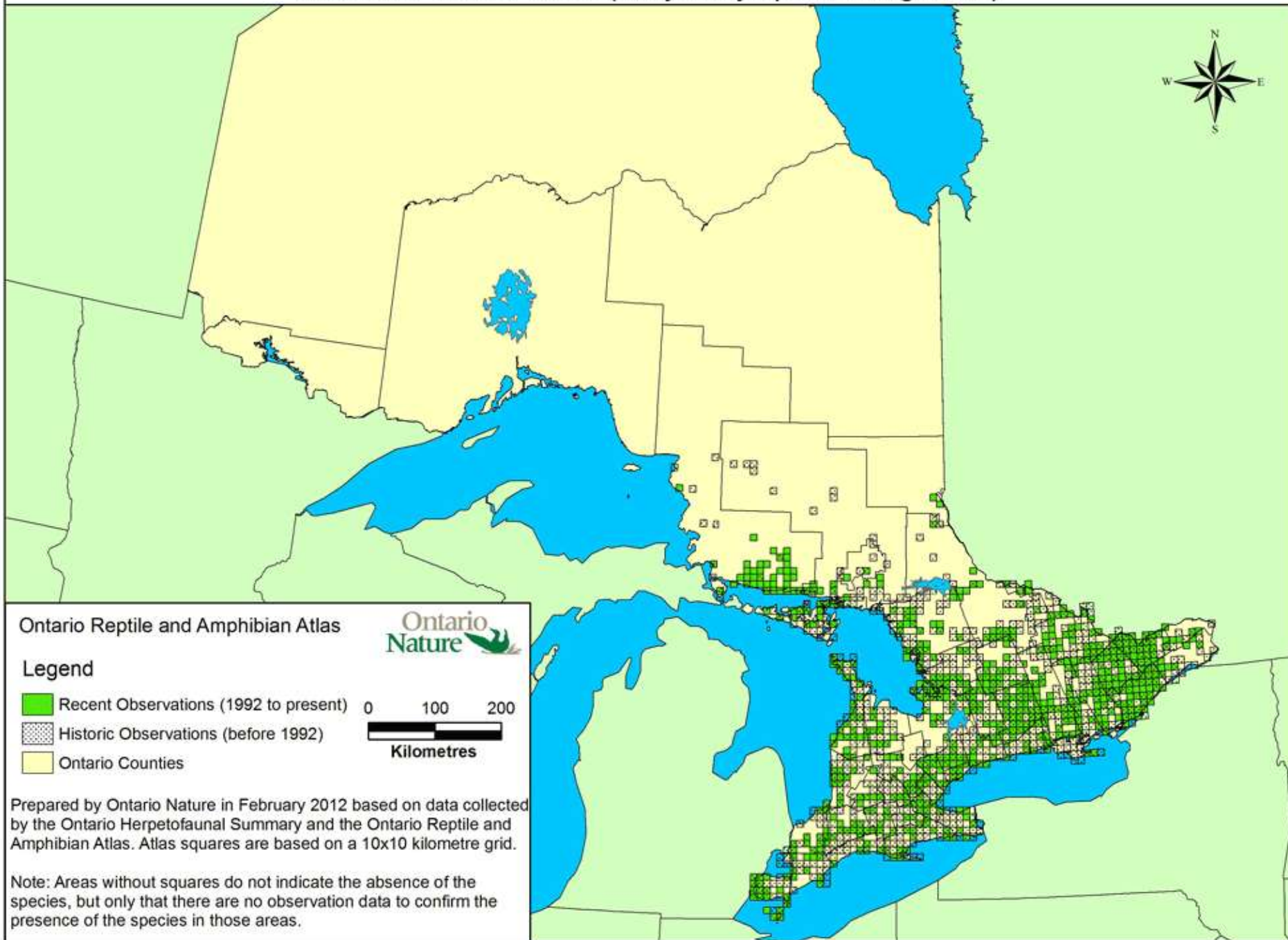








Midland Painted Turtle (*Chrysemys picta marginata*)





Special Concern

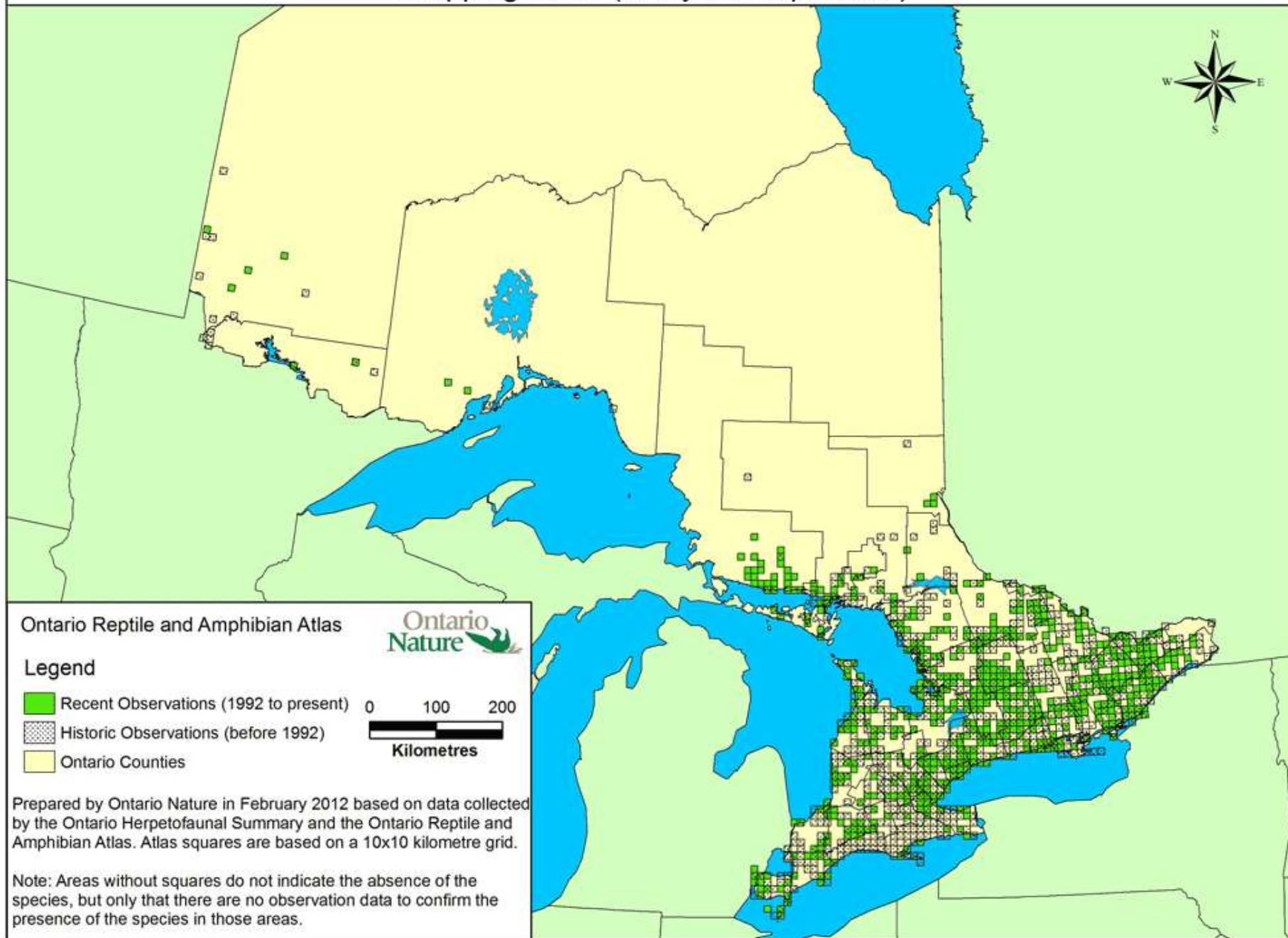
In Praise of Older Turtles







Snapping Turtle (*Chelydra serpentina*)





Special Concern







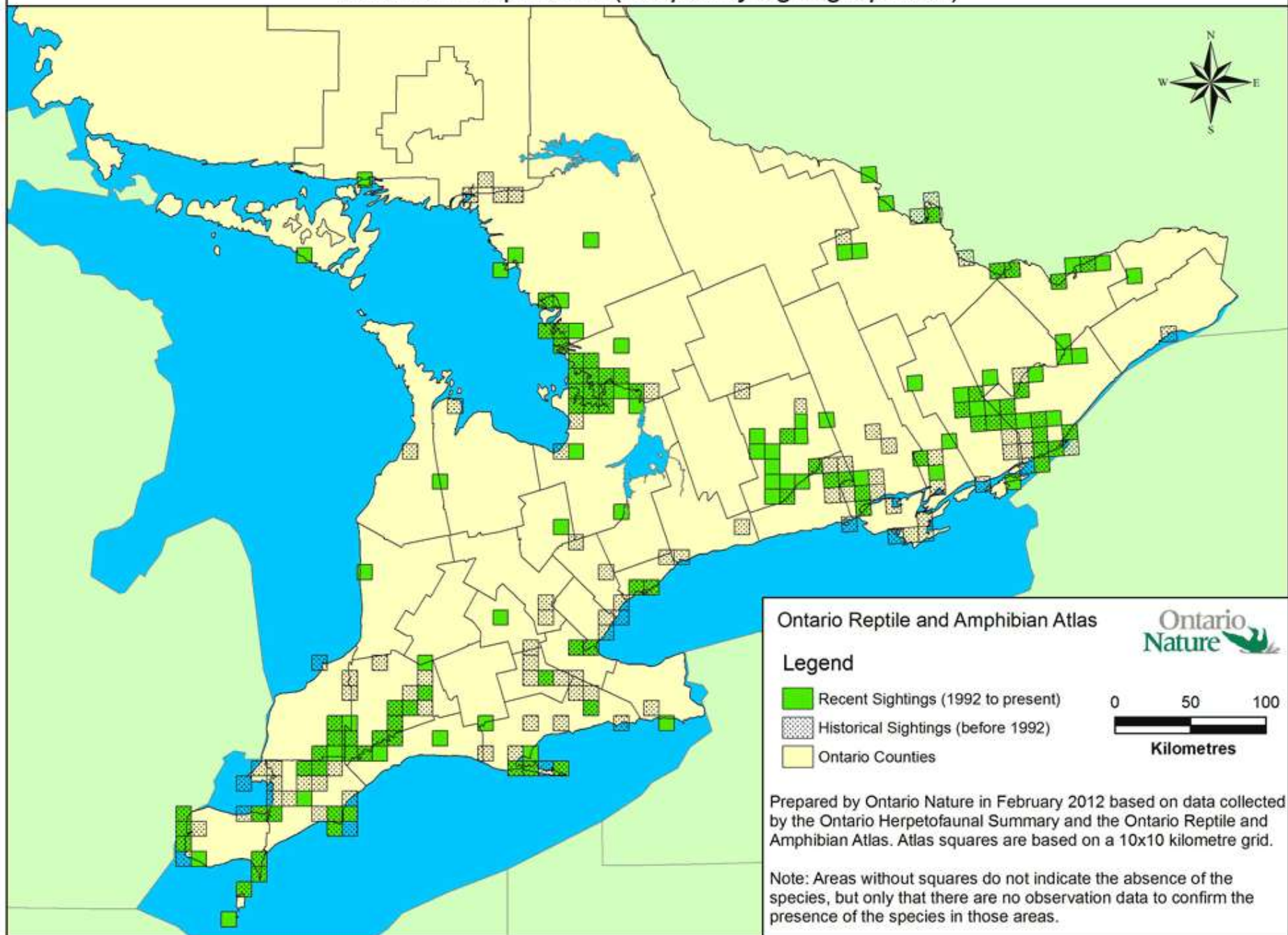


Photo Credits: A. Bennett



Photo Credit: A. Ben

Northern Map Turtle (*Graptemys geographica*)



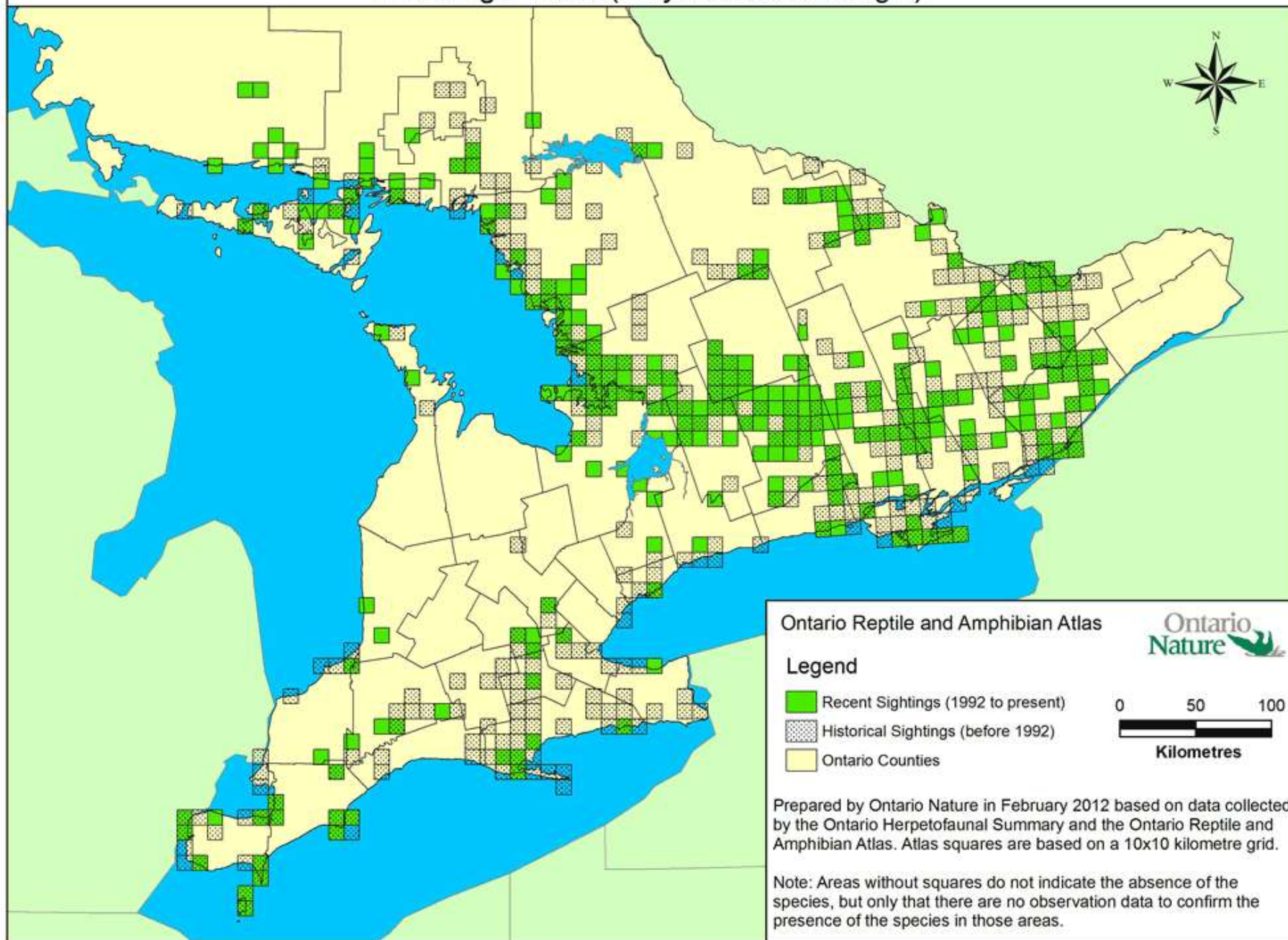


Threatened





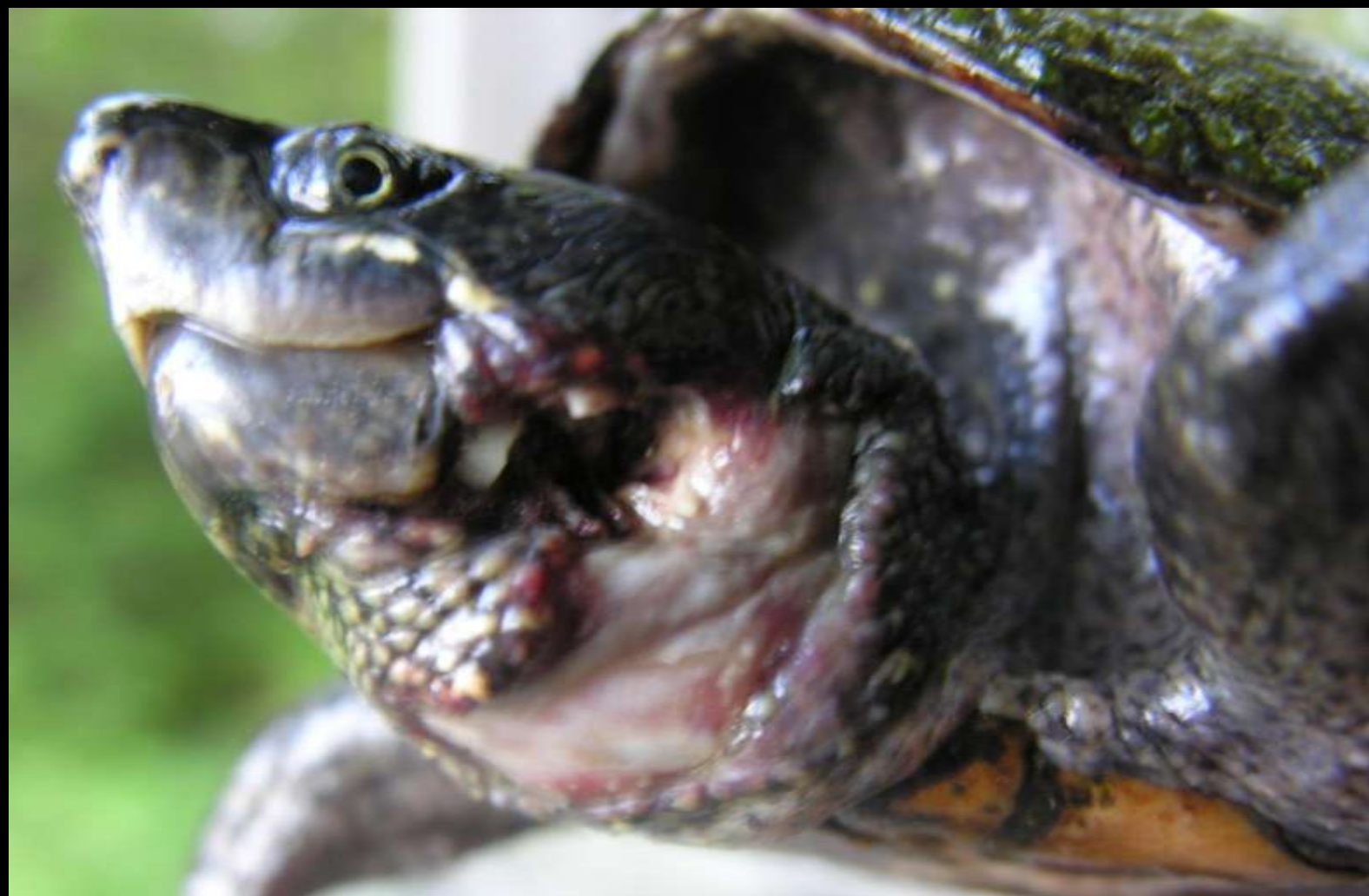
Blanding's Turtle (*Emydoidea blandingii*)





Threatened

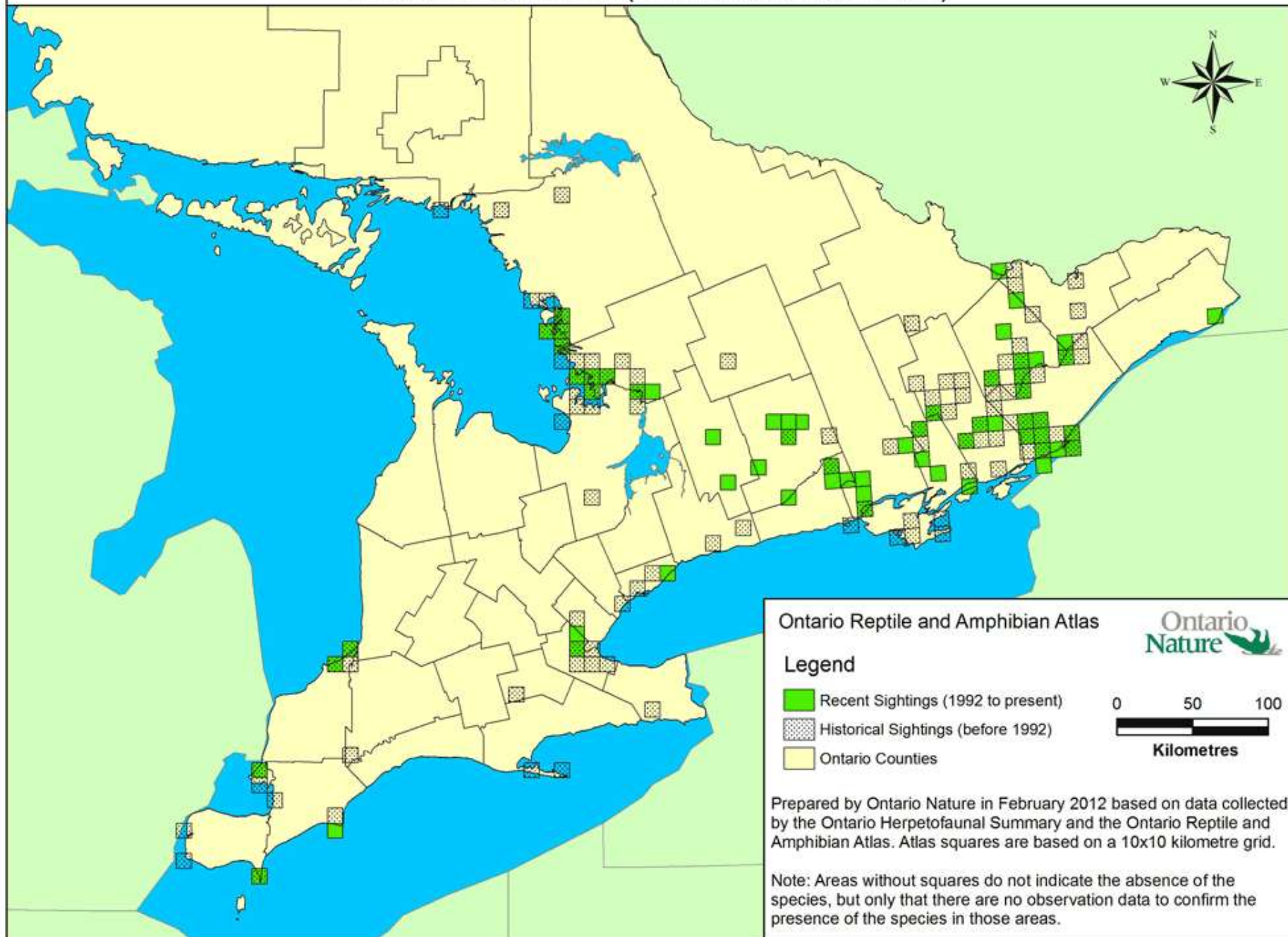








Eastern Musk Turtle (*Sternotherus odoratus*)



Endangered











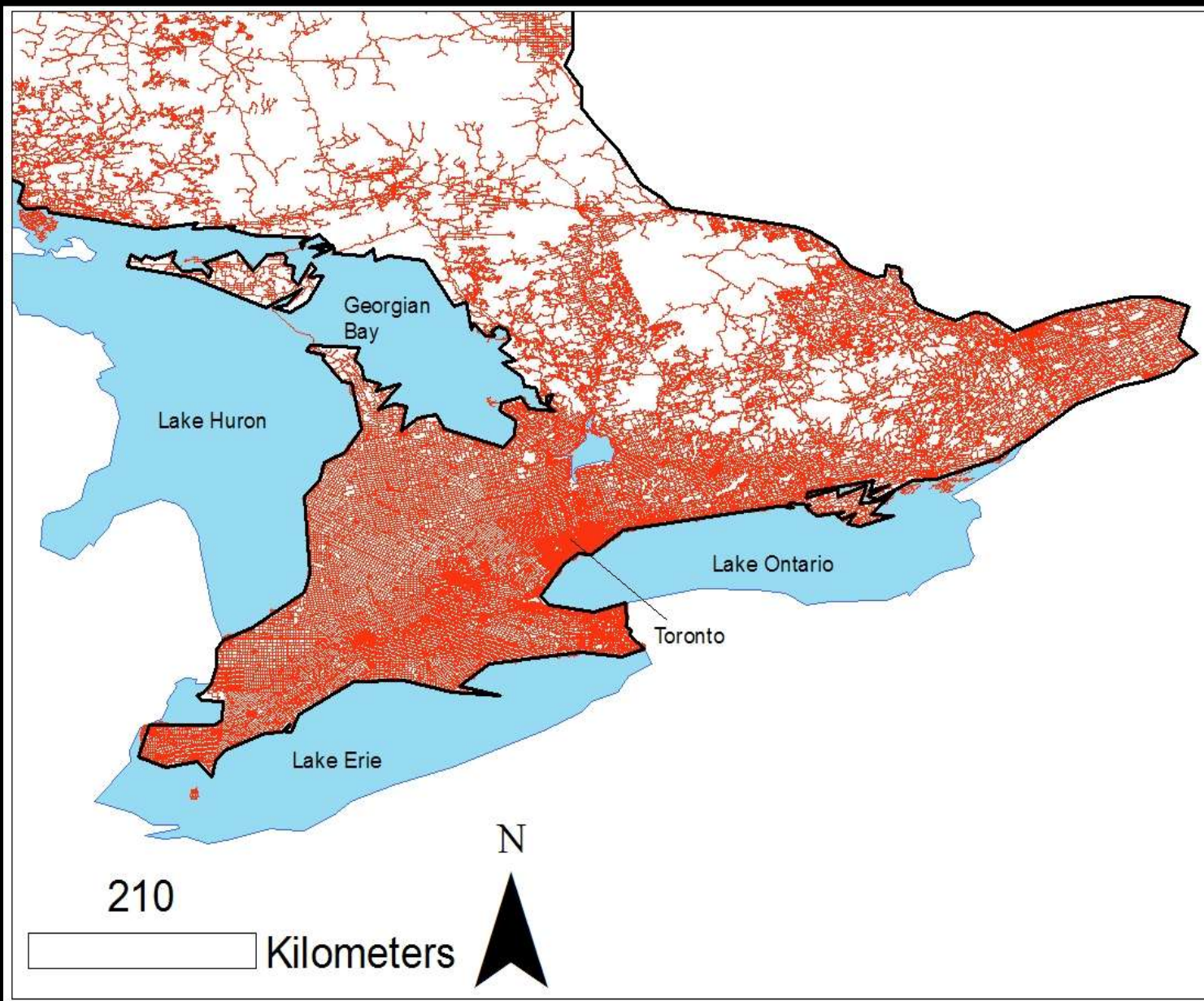










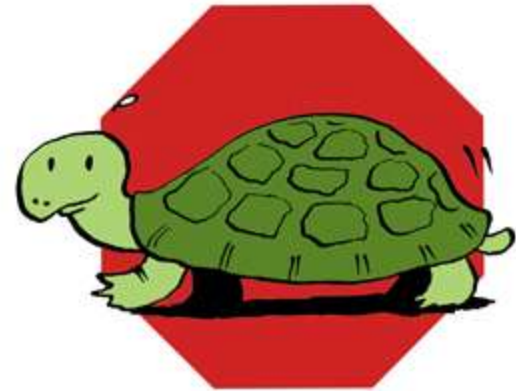




I BRAKE FOR TURTLES!

Canada

Ontario









Found an Injured Turtle?

- Record the location!
- Handle the turtle as little as possible.
- If possible, place the turtle in a clean container and cover the head with a clean damp piece of cloth.
- Do not offer food or water.
- Call and make arrangements for transport. Call a local vet first to find treatment or contact the Kawartha Turtle Trauma Centre (705.741.5000) for further instructions.



www.gbbr.ca

http://www.ontarionature.org/protect/species/herpetofaunal_atlas.php

