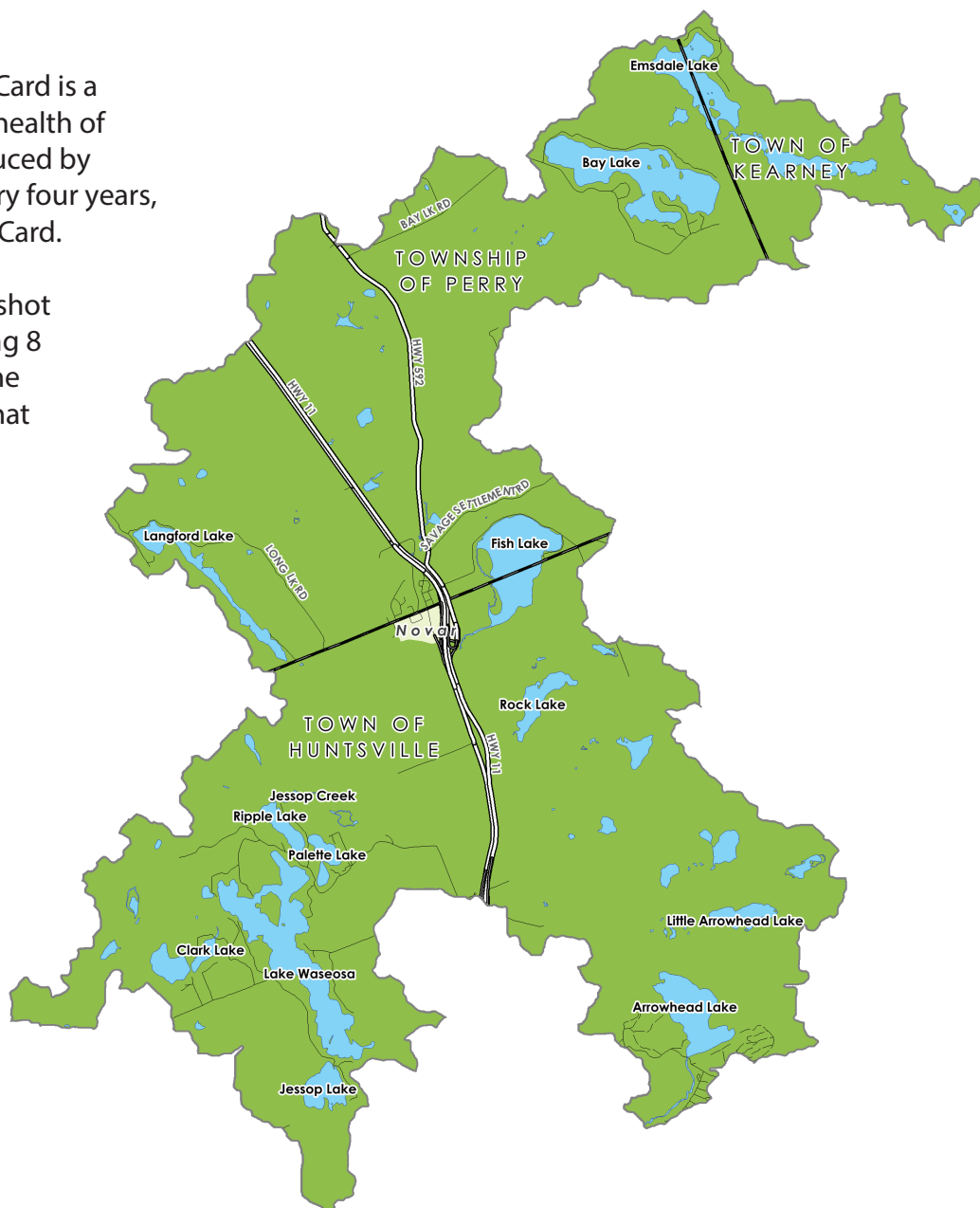




LITTLE EAST RIVER

The Muskoka Watershed Report Card is a science based evaluation of the health of Muskoka's watersheds. It is produced by Muskoka Watershed Council every four years, with 2018 being the fifth Report Card.

The Report Card provides a snapshot of watershed health by evaluating 8 indicators, 4 of which measure the health of the watershed, and 4 that consider potential threats.



Quaternary Watersheds of Muskoka

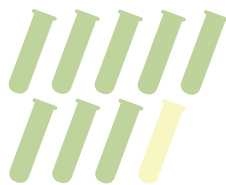


Little East River Watershed Stats:

Total Area (hectares)	Largest Lake	# of Lakes (over 8 hectares)	% Crown Land
9,604	Lake Waseosa (165 ha)	13	9
# of Dams	% Wetland	% Protected Area (provincial parks, crown nature reserves, local land trusts)	
0	7	7	

Total Phosphorous

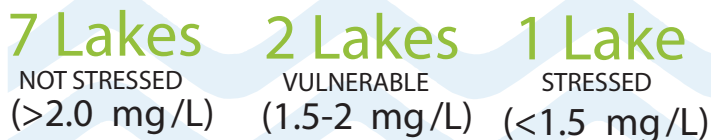
Not Stressed



8/9 sampled lakes in the Little East River Watershed have steady phosphorous concentrations.

Calcium

Not Stressed

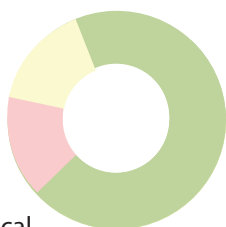


Benthic Macroinvertebrates

Typical

of Lakes Sampled: 9

11% Atypical
11% Extremely Atypical



78% Typical



Invasive Species

Not Stressed

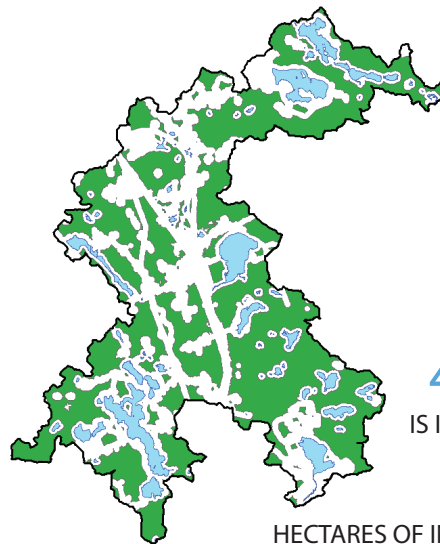
Invasive species reported in this watershed:

- Rainbow Smelt
- Rusty Cray Fish
- Spiny Waterflea



Interior Forest

Vulnerable



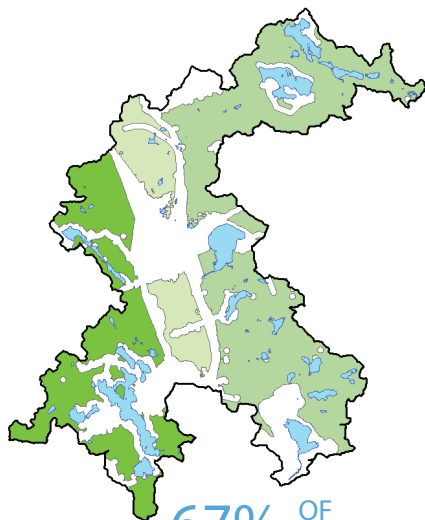
49% OF LAND IS INTERIOR FOREST

4,745

HECTARES OF INTERIOR FOREST

Fragmentation

Vulnerable



Size of Patches:

200 - 499 ha

500 - 4,999 ha

5,000 - 9,999 ha

10,000+ ha

67% OF LAND IS NATURAL AREA

33% OF LAND IS FRAGMENTED

Species At Risk

Not Graded



There are 46 species at risk in the Muskoka Watershed and the **Monarch Butterfly** is one of them!

Climate Change

Vulnerable

Lakes in Muskoka today have approximately **3 weeks** less winter ice cover than in 1975.

Summer water temperatures in Muskoka's lakes are **0.5 °C** warmer on average than in 1980.