

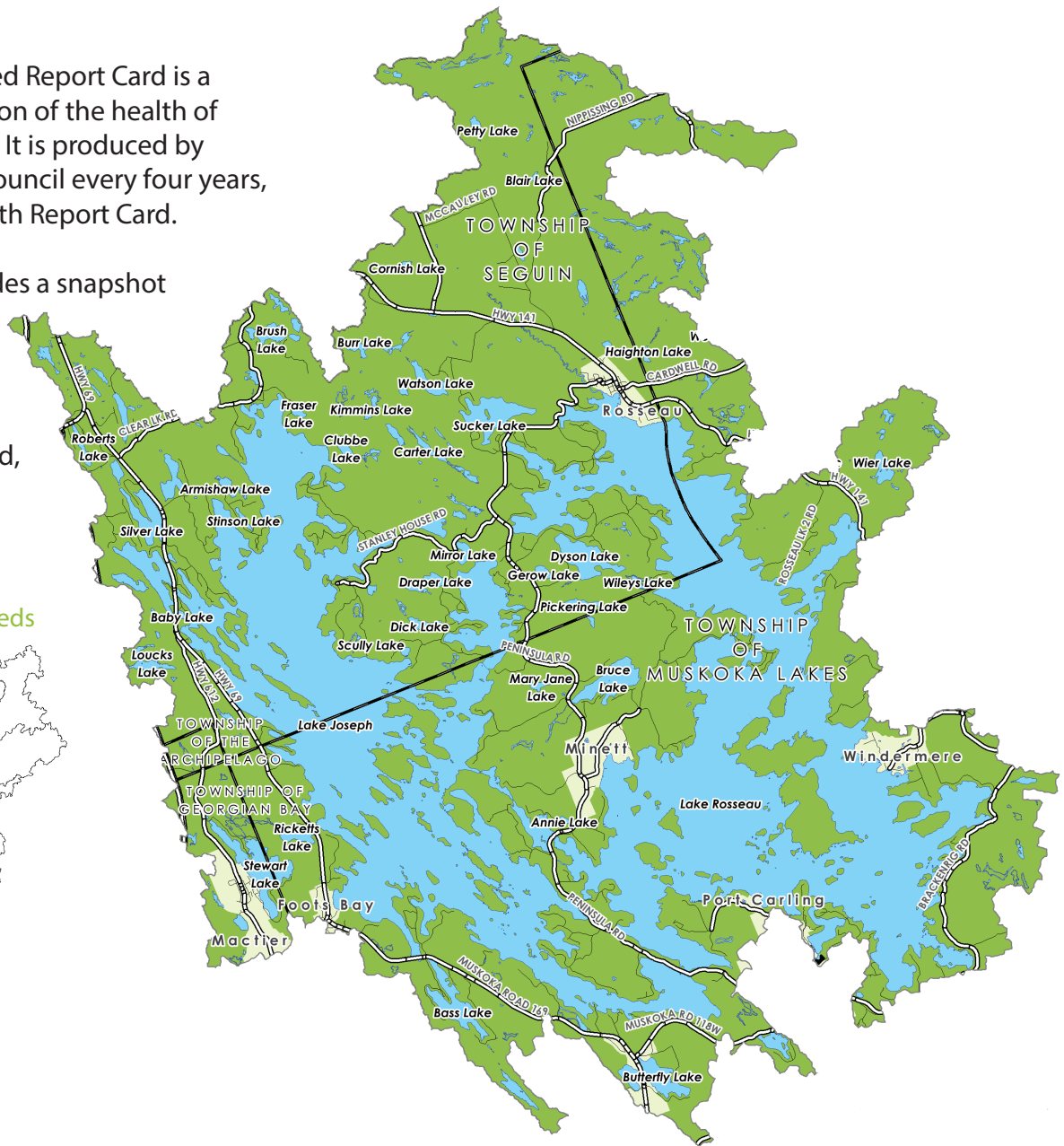


2018 Muskoka Watershed Report Card

Quaternary Watershed: LAKE ROSSEAU

The Muskoka Watershed Report Card is a science based evaluation of the health of Muskoka's watersheds. It is produced by Muskoka Watershed Council every four years, with 2018 being the fifth Report Card.

The Report Card provides a snapshot of watershed health by evaluating 8 indicators, 4 of which measure the health of the watershed, and 4 that consider potential threats.



Quaternary Watersheds of Muskoka



Lake Rosseau Watershed Stats:

Total Area (hectares)	Largest Lake	# of Lakes (over 8 hectares)	% Crown Land
42,583	Lake Rosseau (5,500 ha)	52	12
# of Dams	% Wetland	% Protected Area (provincial parks, crown nature reserves, local land trusts)	
2	5	2	

Total Phosphorous

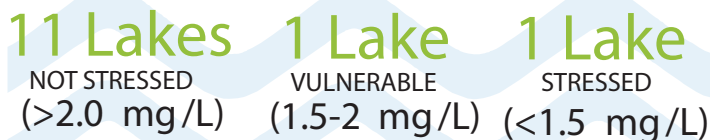
Not Stressed



14/14 sampled lakes in the Lake Rosseau Watershed have steady phosphorous concentrations.

Calcium

Not Stressed



Benthic Macroinvertebrates

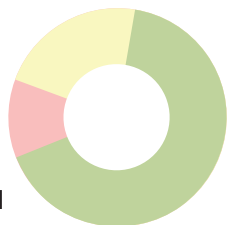
Typical

of Lakes Sampled: 10

20% Atypical

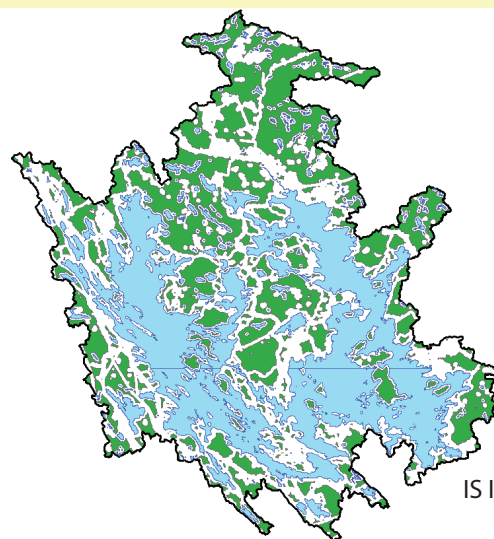
10% Extremely Atypical

70% Typical



Interior Forest

Vulnerable



43%

IS INTERIOR FOREST

11,789

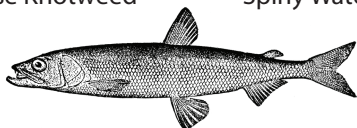
HECTARES OF INTERIOR FOREST

Invasive Species

Vulnerable

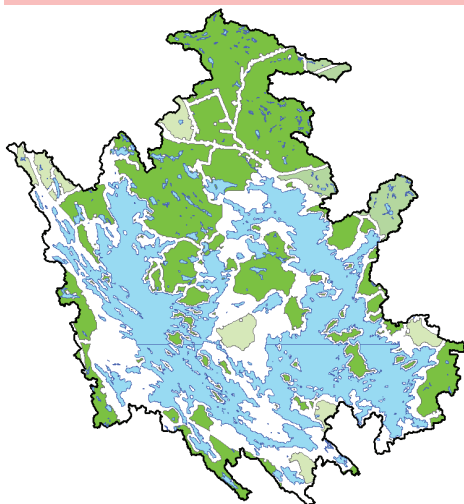
Invasive species reported in this watershed:

- Phragmites
- Giant Hogweed
- Japanese Knotweed
- Rainbow Smelt
- Rusty Cray Fish
- Spiny Waterflea



Fragmentation

Stressed



Size of Patches:

200 - 499 ha

500 - 4,999 ha

5,000 - 9,999 ha

10,000+ ha

59% OF LAND IS NATURAL AREA

41% OF LAND IS FRAGMENTED

Species At Risk

Not Graded

There are 46 species at risk in the Muskoka Watershed and the **Lake Sturgeon** is one of them!



Climate Change

Vulnerable

Lakes in Muskoka today have approximately **3 weeks** less winter ice cover than in 1975.

Summer water temperatures in Muskoka's lakes are **0.5 °C** warmer on average than in 1980.